

asset inventory



storyboard
2.0

asset inventory

0-00



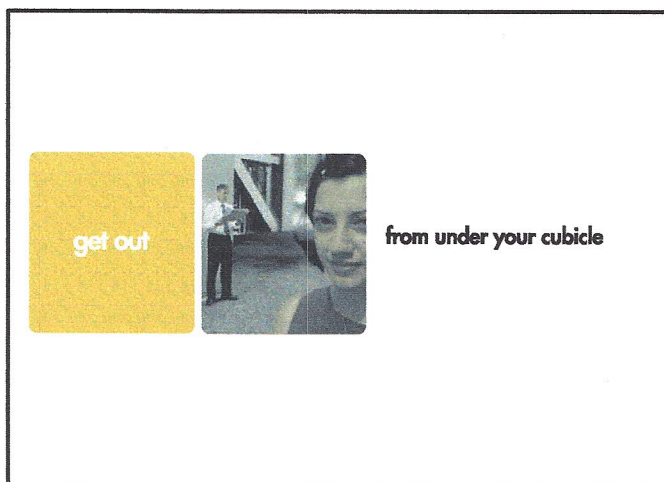
intro

0-00 (1) INTRO



SCREEN #: 0-00
TITLE: INTRO: SAMPLE SCREENS
DESCRIPTION:

SEE FLASH INTRO: "assetV5.2"



SCREEN #: 0-00
TITLE: INTRO: SAMPLE SCREENS
DESCRIPTION:

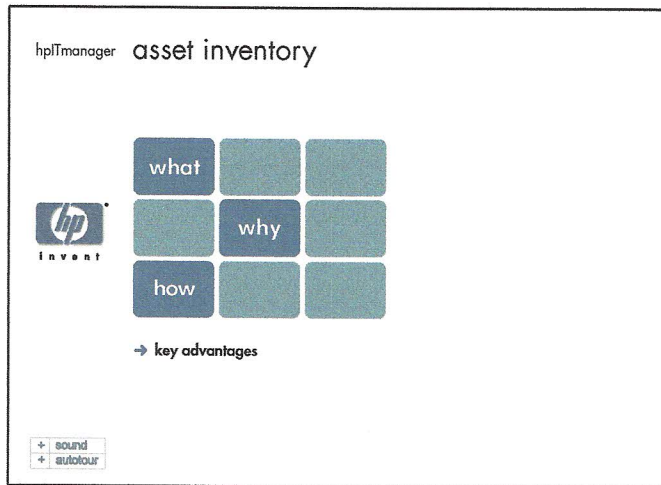
SEE FLASH INTRO: "assetV5.2"



SCREEN #: 0-00
TITLE: INTRO: SAMPLE SCREENS
DESCRIPTION:

SEE FLASH INTRO: "assetV5.2"

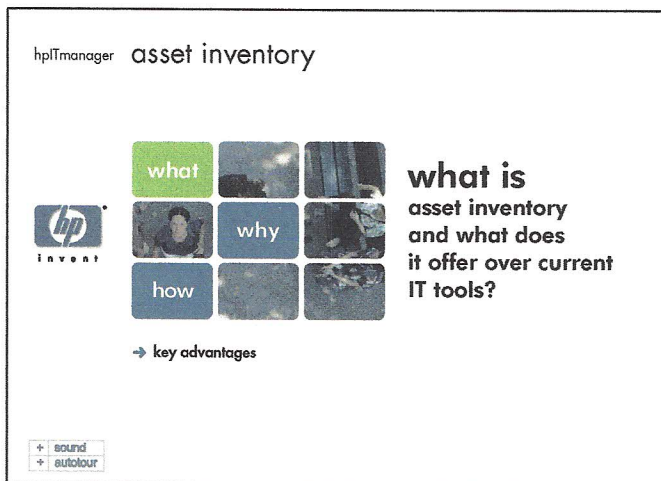
1-00 (1) MAIN



SCREEN #: 1-10
TITLE: MAIN: BASE SCREEN
DESCRIPTION:

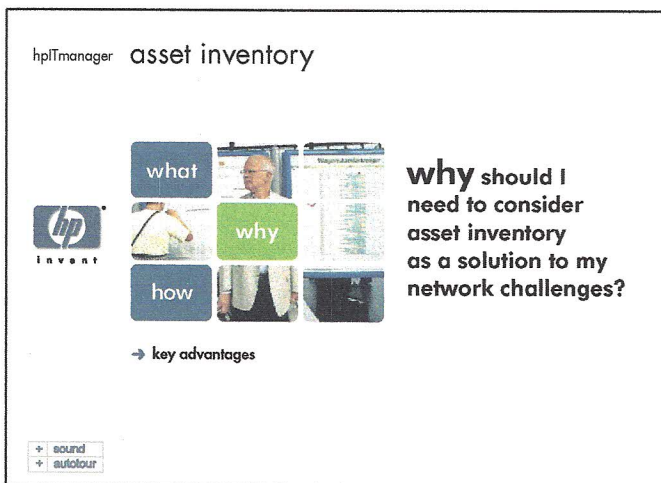
Base screen.

Effects on set of nine-box layout to be announced.



SCREEN #: 1-11
TITLE: MAIN: BASE SCREEN
DESCRIPTION:

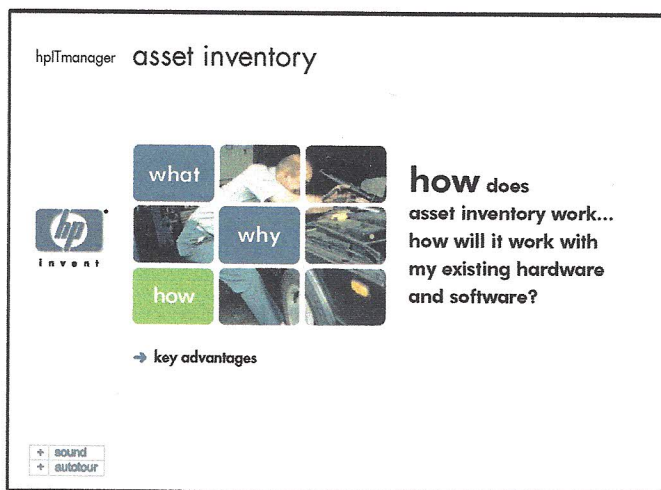
ROLLOVER "WHAT" BOX



SCREEN #: 1-12
TITLE: MAIN: BASE SCREEN
DESCRIPTION:

ROLLOVER "WHY" BOX

1-00 (2) MAIN



SCREEN #: 1-13
TITLE: MAIN: BASE SCREEN
DESCRIPTION:

ROLLOVER "HOW" BOX



SCREEN #: 1-10
TITLE: MAIN: BASE SCREEN
DESCRIPTION:

ROLLOVER "KEY ADVANTAGES" LINK

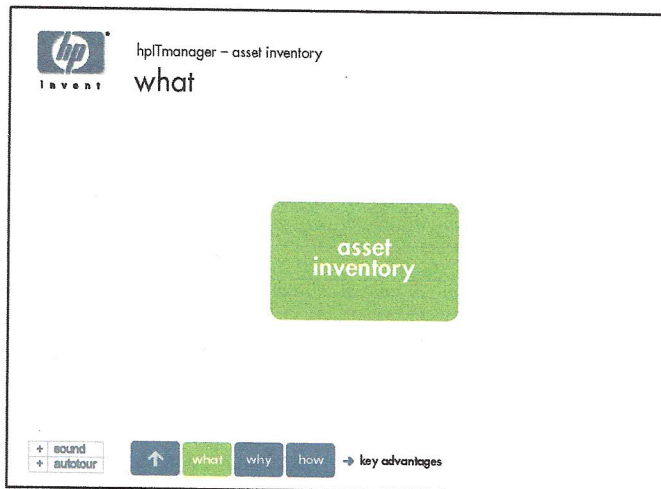
asset inventory

2-00



WHAT

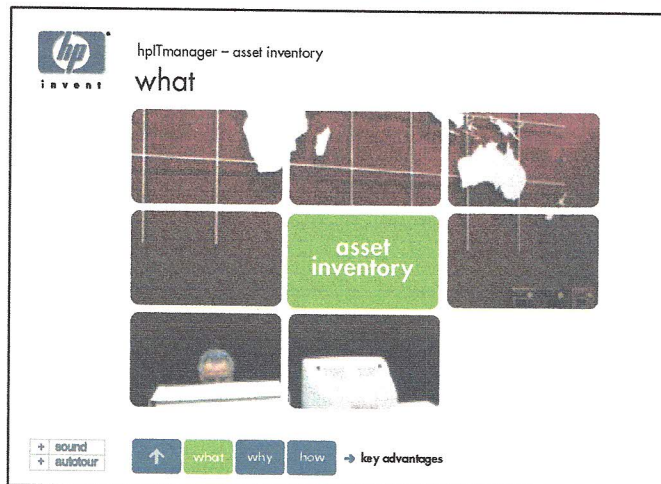
2-10(1) WHAT



SCREEN #: 2-10
TITLE: WHAT
DESCRIPTION:

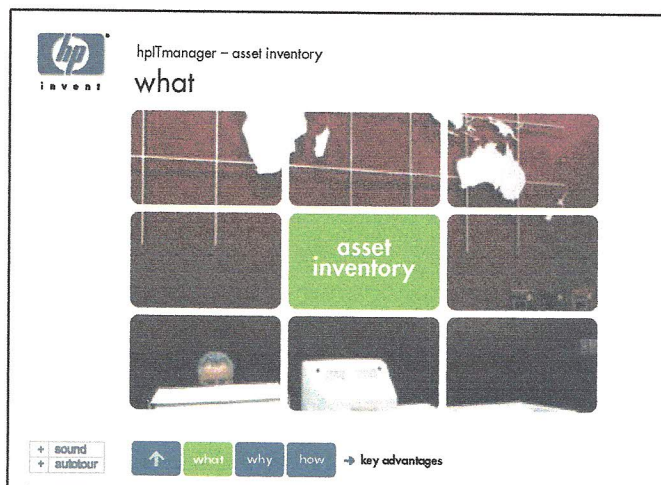
Three boxes: "What", "Is", "asset inventory?"
(see below)

- 1) Green box with what zooms-in to size seen in next board.
- 2) Scaling with box, the three words switch from "what" to "is" to "asset inventory?"
- 3) Question mark of "asset inventory?" disappears.



SCREEN #: 2-10.1
TITLE: WHAT
DESCRIPTION:

Picture boxes pop in to eventually surround
asset inventory box.

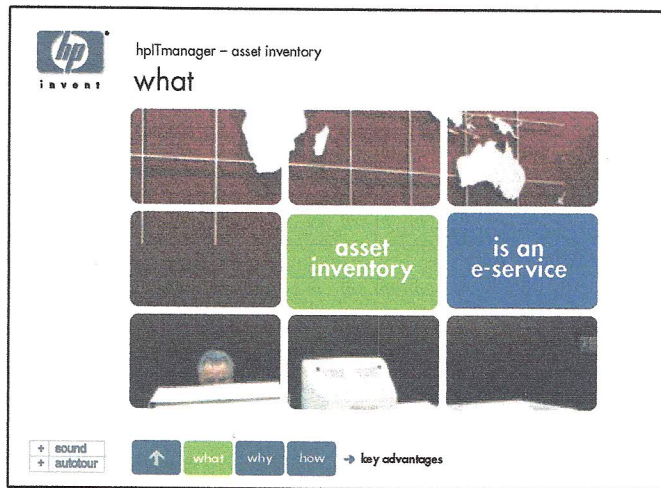


SCREEN #: 2-10.2
TITLE: WHAT
DESCRIPTION:

Picture boxes pop in to eventually surround
asset inventory box.

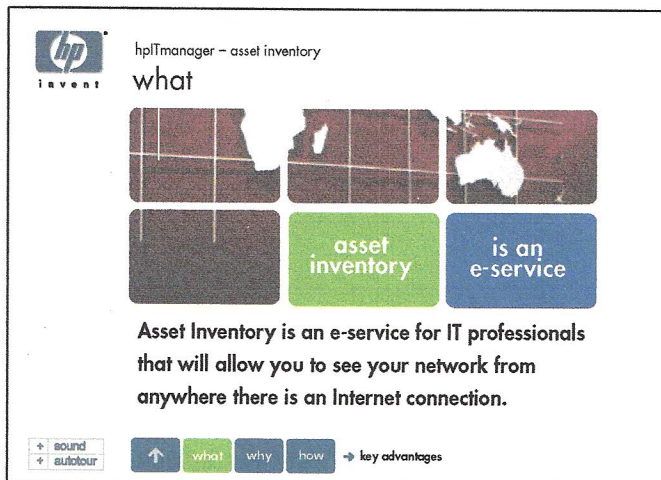
Go to next screen without delay or break in
pacing.

2-10(1.2) WHAT



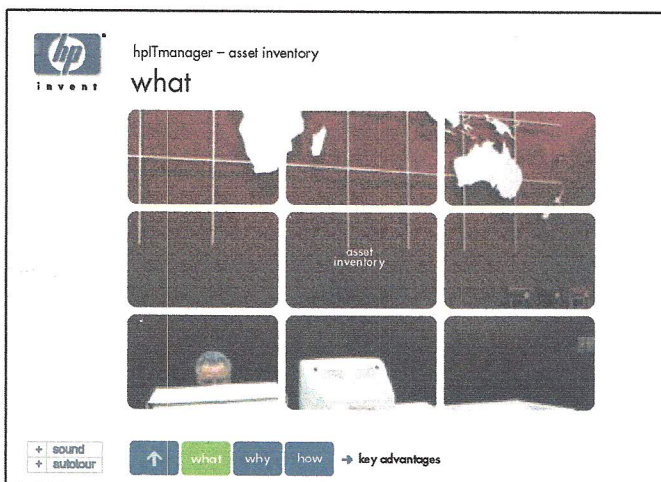
SCREEN #: 2-10.3
TITLE: WHAT
DESCRIPTION:

Text, "is an e-service" box pops in



SCREEN #: 2-10.4
TITLE: WHAT
DESCRIPTION:

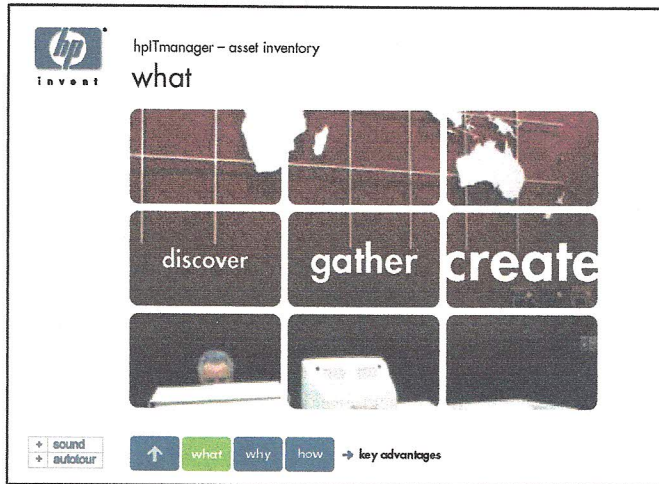
Text "...Asset Inventory is an e-service for..." pops in.



SCREEN #: 2-10.5
TITLE: WHAT
DESCRIPTION:

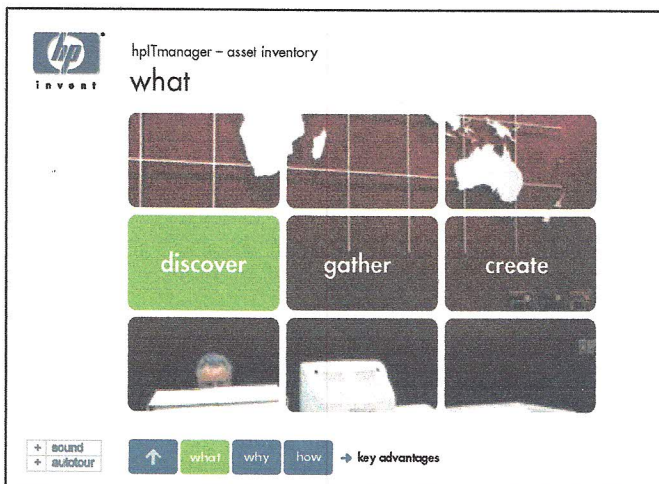
- 1) Missing picture boxes flip back in while...
- 2) Text, "asset inventory" zooms out

2-10(2) WHAT



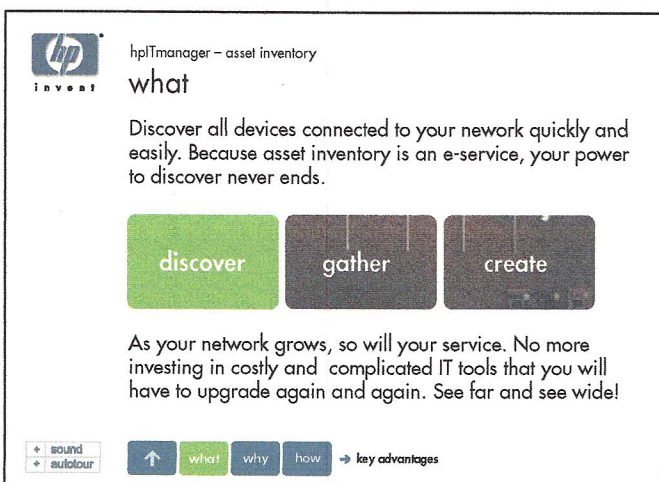
SCREEN #: 2-10.6
TITLE: WHAT
DESCRIPTION:

Titles zoom out one by one, then normalize to same size each.



SCREEN #: 2-10.7
TITLE: WHAT
DESCRIPTION:

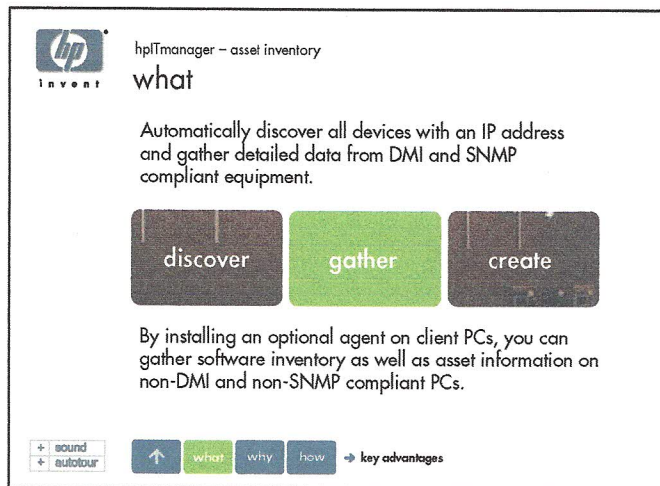
- 1) Title boxes flash green one by one, then settle on first title ("discover")
- 2) Green highlight on "discover" box.



SCREEN #: 2-11
TITLE: WHAT
DESCRIPTION:

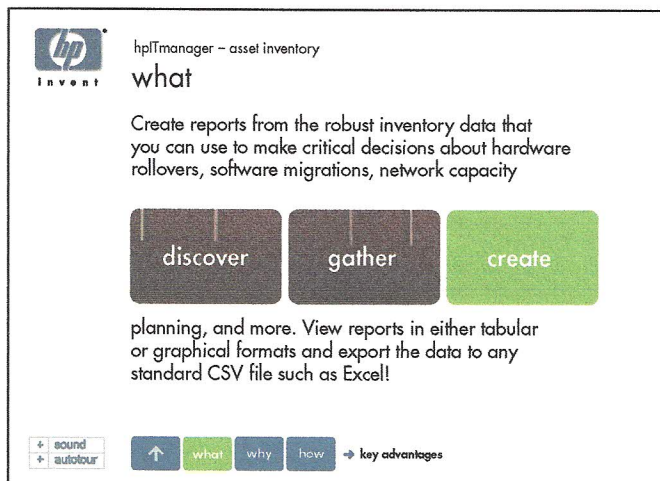
- 1) Two by two, boxes (top and bottom row) disappear.
- 2) Text pops in.

2-10(3) WHAT



SCREEN #: 2-12
TITLE: WHAT
DESCRIPTION:

- 1) Green box highlights "gather"
- 2) Text changes accordingly



SCREEN #: 2-13
TITLE: WHAT
DESCRIPTION:

- 1) Green box highlights "create"
- 2) Text changes accordingly

asset inventory

3-00




WHY

3-10 to 3-12 WHY

hp
invent

hpITmanager - asset inventory
why

Do you really know what's on your network? In a time when downloading software from the net is ubiquitous, it is becoming increasingly difficult to know what your users may have installed on their machines. Keeping track of software packages, drivers and updates is generally a complex and time consuming endeavor.



+ sound
+ autotour

↑ what why how → key advantages

SCREEN #: 3-10 (9/25/00)
TITLE: WHY
DESCRIPTION:


- 1) Text appears
- 2) 3 picture boxes appear one by one
- 3) Slow zoom in on picture set
- 4) 3 picture boxes disappear one by one

hp
invent

hpITmanager - asset inventory
why

Tasks such as software rollouts, hardware configurations and upgrades are much more difficult complex than they have to be.

Gathering precise and up-to-date inventory information is the first step in reducing your total cost of ownership.



+ sound
+ autotour

↑ what why how → key advantages

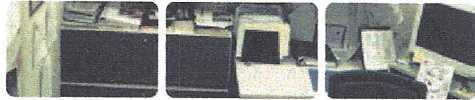
SCREEN #: 3-11(9/25/00)
TITLE: WHY
DESCRIPTION:

- 1) Text appears
- 2) 3 picture boxes appear one by one
- 3) Slow zoom in on picture set
- 4) 3 picture boxes disappear one by one

hp
invent

hpITmanager - asset inventory
why

As your network grows in both size and complexity, it becomes more and more difficult to keep up-to-date, accurate inventory information.



The HP IT Manager asset inventory service has solved this problem! With Asset Inventory, you'll know what's installed on every part of your network, at any time, without having to visit a single desktop.


+ sound
+ autotour

↑ what why how → key advantages

SCREEN #: 3-12(9/25/00)
TITLE: WHY
DESCRIPTION:

- 1) Text appears
- 2) 3 picture boxes appear one by one
- 3) Slow zoom in on picture set
- 4) 3 picture boxes disappear one by one

3-10 to 3-12 WHY




hpITmanager - asset inventory

why

Establishing a comprehensive asset management system is becoming a priority for most companies in today's SMB space.

IT experts agree that gaining control of your distributed computing environment will enable you to use your assets more effectively, and ultimately result in a reduced TCO.



+ sound
+ autotour


↑ what why how → key advantages

SCREEN #: 3-10 (9/25/00)

TITLE: WHY

DESCRIPTION:

- 1) Text appears
- 2) 3 picture boxes appear one by one
- 3) Slow zoom in on picture set
- 4) 3 picture boxes disappear one by one




hpITmanager - asset inventory

why

An accurate, up-to-date inventory of all your networking equipment is the first step in gaining this control.

Rapid growth and constant change make this an especially difficult task.

Fortunately, the HP IT Manager solves this problem by providing a complete, accurate and always up-to-date inventory of all your networking gear.



+ sound
+ autotour


↑ what why how → key advantages

SCREEN #: 3-11(9/25/00)

TITLE: WHY

DESCRIPTION:

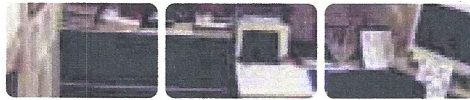
- 1) Text appears
- 2) 3 picture boxes appear one by one
- 3) Slow zoom in on picture set
- 4) 3 picture boxes disappear one by one



hpITmanager - asset inventory

why

Although it is difficult to quantify the cost savings that can be achieved by utilizing accurate up-to-date inventory information, research suggests that you can realized cost



savings of anywhere from 5% to 10% within 18 months. This is significant given that you probably spend an average of \$5,000 to \$7,000 per year for every client PC connected to your network.

+ sound
+ autotour

↑ what why how → key advantages

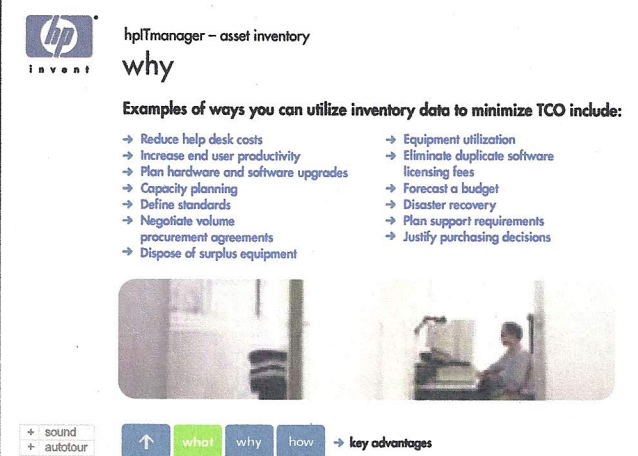
SCREEN #: 3-12(9/25/00)

TITLE: WHY

DESCRIPTION:

- 1) Text appears
- 2) 3 picture boxes appear one by one
- 3) Slow zoom in on picture set
- 4) 3 picture boxes disappear one by one

3-13 to 3-13b WHY



hp
invent

hplTManager - asset inventory

why

Examples of ways you can utilize inventory data to minimize TCO include:

- Reduce help desk costs
- Increase end user productivity
- Plan hardware and software upgrades
- Capacity planning
- Define standards
- Negotiate volume procurement agreements
- Dispose of surplus equipment
- Equipment utilization
- Eliminate duplicate software licensing fees
- Forecast a budget
- Disaster recovery
- Plan support requirements
- Justify purchasing decisions

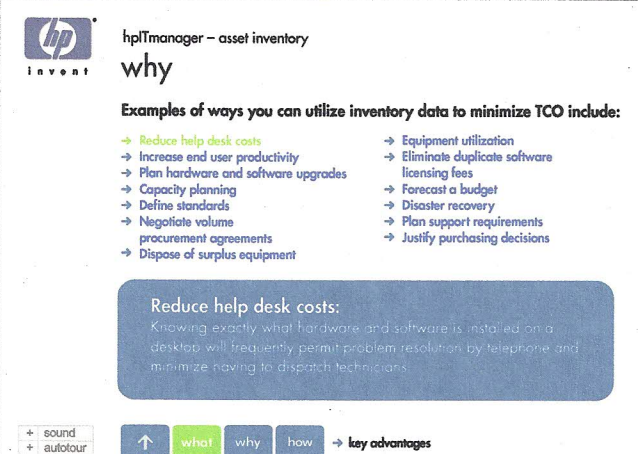
+ sound
+ autotour

↑ what why how → key advantages

SCREEN #: 3-13
TITLE: WHY
DESCRIPTION:

3-10.11 thru 3-10.15 will be rollover based.

Rollover blue text produces copy relating to the rollover headings.



hp
invent

hplTManager - asset inventory

why

Examples of ways you can utilize inventory data to minimize TCO include:

- Reduce help desk costs
- Increase end user productivity
- Plan hardware and software upgrades
- Capacity planning
- Define standards
- Negotiate volume procurement agreements
- Dispose of surplus equipment
- Equipment utilization
- Eliminate duplicate software licensing fees
- Forecast a budget
- Disaster recovery
- Plan support requirements
- Justify purchasing decisions

Reduce help desk costs:
Knowing exactly what hardware and software is installed on a desktop will frequently permit problem resolution by telephone and minimize having to dispatch technicians.

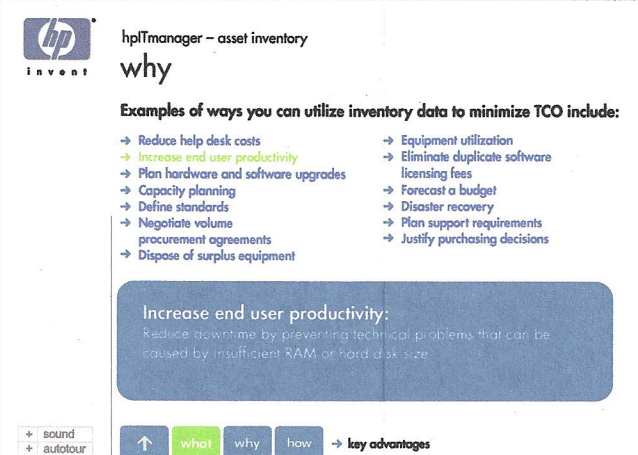
+ sound
+ autotour

↑ what why how → key advantages

SCREEN #: 3-13a
TITLE: WHY
DESCRIPTION:

3-10.11 thru 3-10.15 will be rollover based.

Rollover blue text produces copy relating to the rollover headings.



hp
invent

hplTManager - asset inventory

why

Examples of ways you can utilize inventory data to minimize TCO include:

- Reduce help desk costs
- Increase end user productivity
- Plan hardware and software upgrades
- Capacity planning
- Define standards
- Negotiate volume procurement agreements
- Dispose of surplus equipment
- Equipment utilization
- Eliminate duplicate software licensing fees
- Forecast a budget
- Disaster recovery
- Plan support requirements
- Justify purchasing decisions

Increase end user productivity:
Reduce downtime by preventing technical problems that can be caused by insufficient RAM or hard disk size.

+ sound
+ autotour

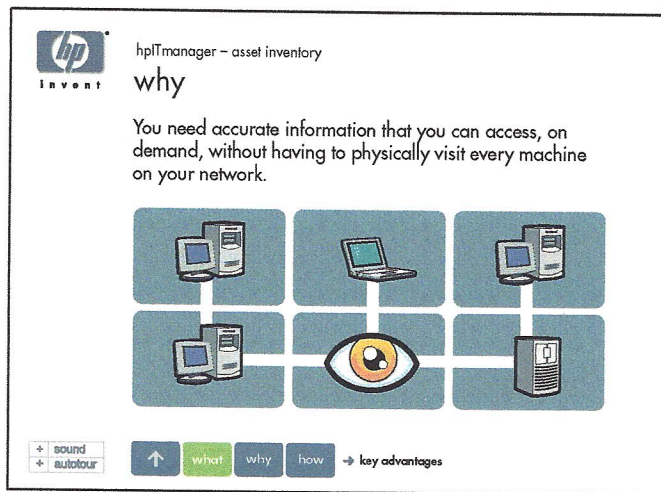
↑ what why how → key advantages

SCREEN #: 3-13b
TITLE: WHY
DESCRIPTION:

3-10.11 thru 3-10.15 will be rollover based.

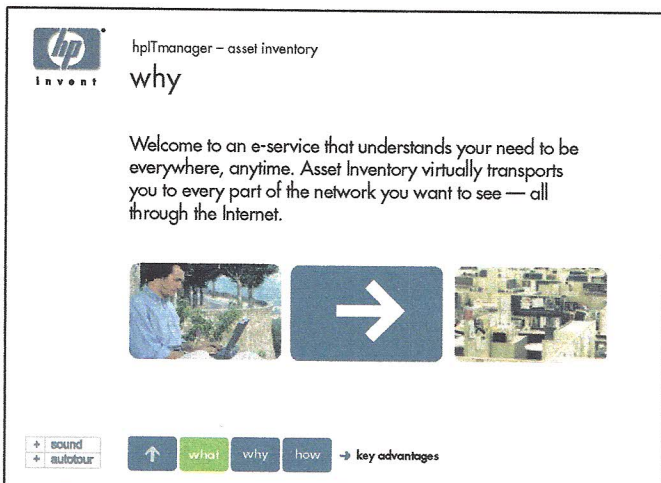
Rollover blue text produces copy relating to the rollover headings.

3-13 to 3-15 WHY



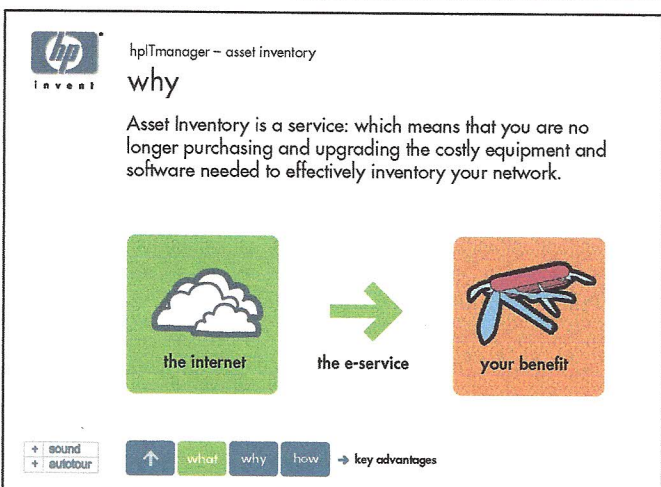
SCREEN #: 3-13 (9/25/00)
TITLE: WHY
DESCRIPTION:

- 1) Six boxes appear two by two left to right
- 2) Eye appears
- 3) Machines appear one by one
- 4) White lines extend from Eye to Machines.



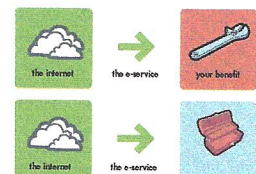
SCREEN #: 3-14 (9/25/00)
TITLE: WHY
DESCRIPTION:

- 1) Text appears
- 2) Picture boxes (with arrow) appear box by box, left to right.




SCREEN #: 3-15 (9/25/00)
TITLE: WHY
DESCRIPTION:

- 1) Start with Cloud, Internet label and Green box.
- 2) From under the box comes the jack knife illustration with box, as well as arrow.
- 3) Start with Cloud, Internet label and Green box.
- 4) Change jack knife illust. to other "tool" illust as seen to the right.



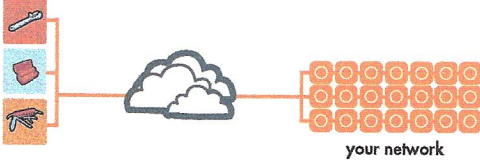
3-16 WHY

**invent**

hplTmanager - asset inventory

why

While current tools are costly, complex and are in constant need for upgrades, Asset Inventory provides comprehensive, accurate and up-to-date information with minimal investments of time, effort, and system overhead.



your network

+ sound

+ autotour

↑

what

why

how

→ key advantages

SCREEN #: 3-16 (9/25/00)

TITLE: WHY

DESCRIPTION:

Text changes.

- 1) Last tool from above screen zooms out to the left.
- 2) Fill in other "tool" boxes to fit layout on the left.
- 3) Add cloud, then add network
- 4) Add flow lines.

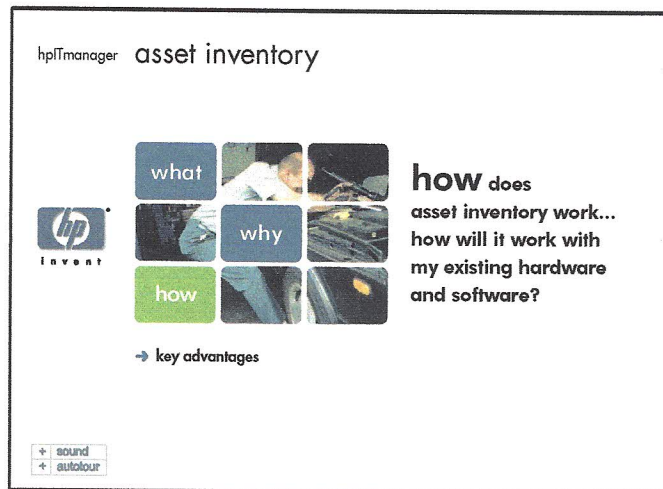
asset inventory

4-00



HOW

4-00 HOW



SCREEN #: 4-00
TITLE: HOW: BASE SCREEN
DESCRIPTION:

SDF



SCREEN #: 4-00
TITLE: HOW: BASE SCREEN
DESCRIPTION:

SDF

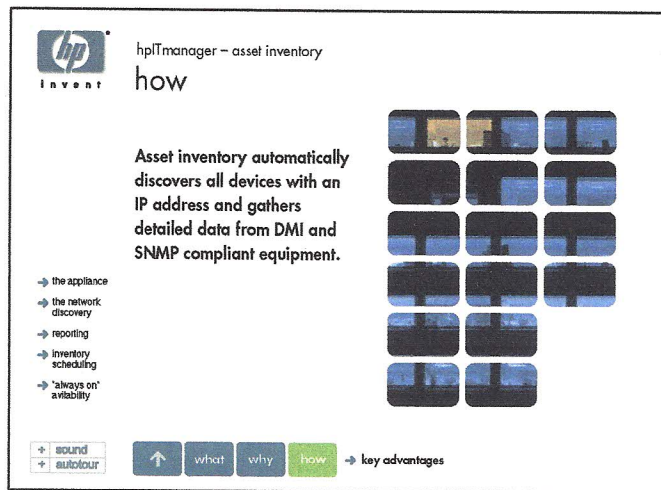


SCREEN #: 1-11
TITLE: HOW: BASE SCREEN
DESCRIPTION:

SDF

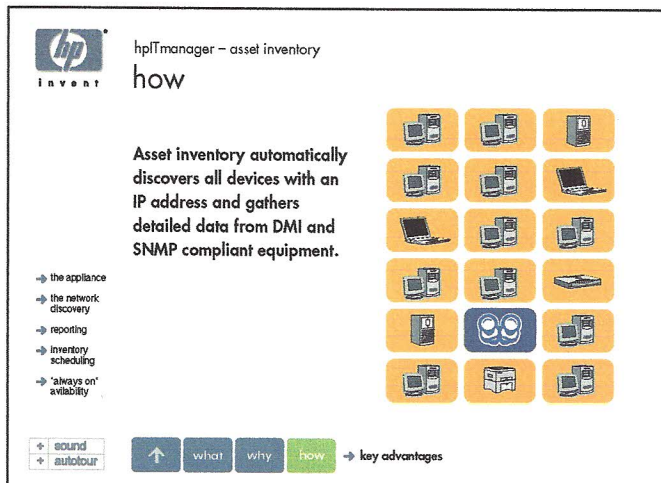
4-01 to 4-01.2 HOW

ally
an
id
nt.



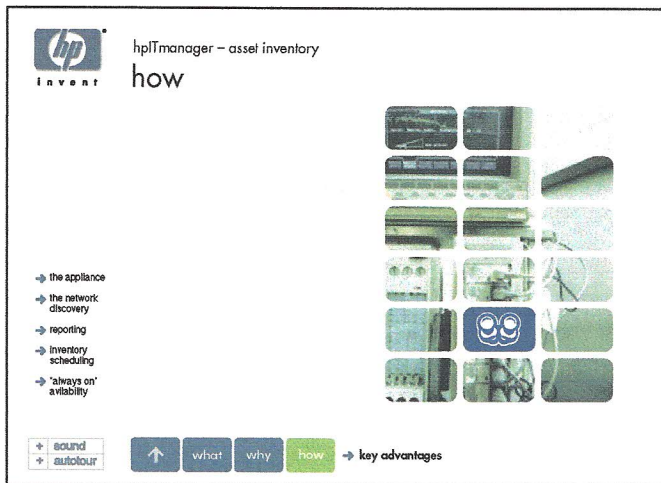
SCREEN #: 4-01
TITLE: HOW: intro
DESCRIPTION:

- 1) text animates in
- 2) boxes animate in two by two—in a row or randomly
- 3) slow image pan



SCREEN #: 4-01.1
TITLE: HOW: intro
DESCRIPTION:

- 1) boxes with picture change in a random fashion, to illustrated boxes until all boxes are changed.

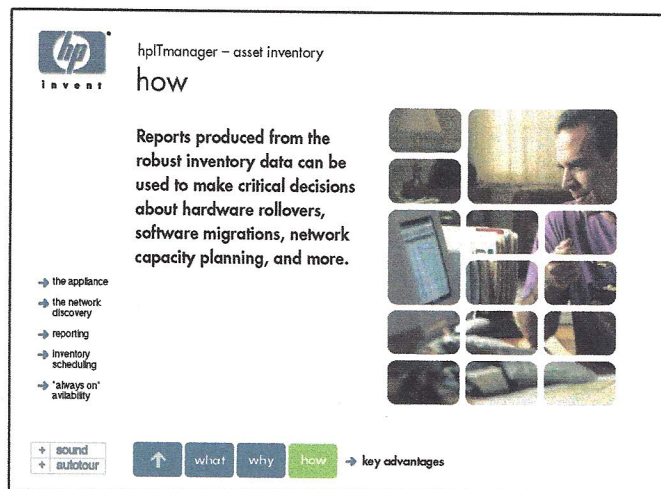


SCREEN #: 4-01.2
TITLE: HOW: intro
DESCRIPTION:

- 1) text change
- 2) illustrated boxes change in a random fashion, to picture boxes until all boxes are changed.

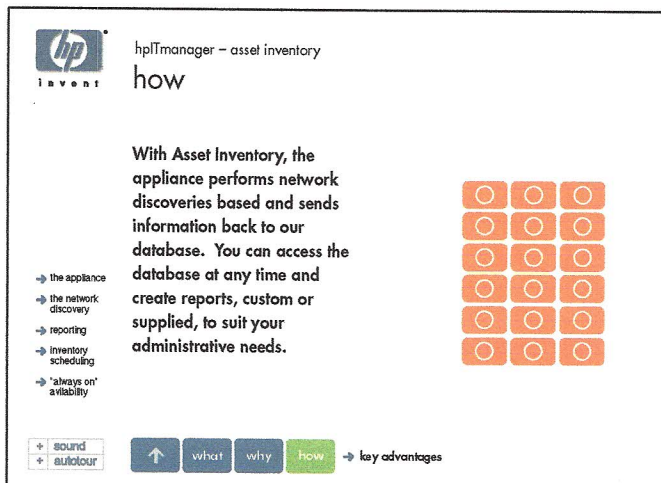
id
s by
ent.

4-01.3 to 4-01.5 HOW



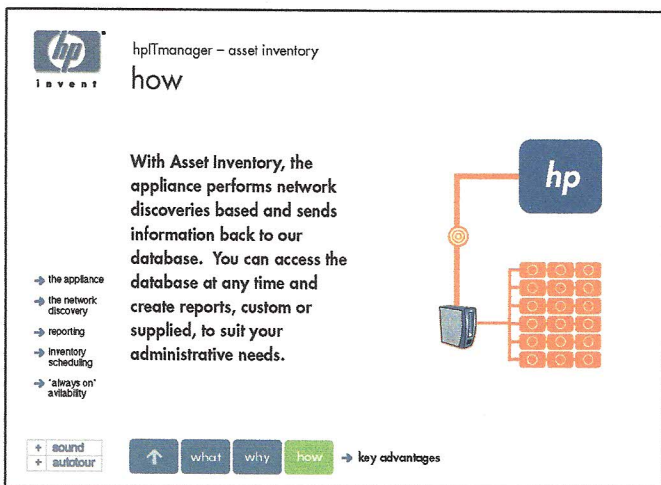
SCREEN #: 4-01.3
TITLE: HOW: intro
DESCRIPTION:

- 1) new picture wipes in, box by box
- 2) slow image pan



SCREEN #: 4-01.4
TITLE: HOW: intro
DESCRIPTION:

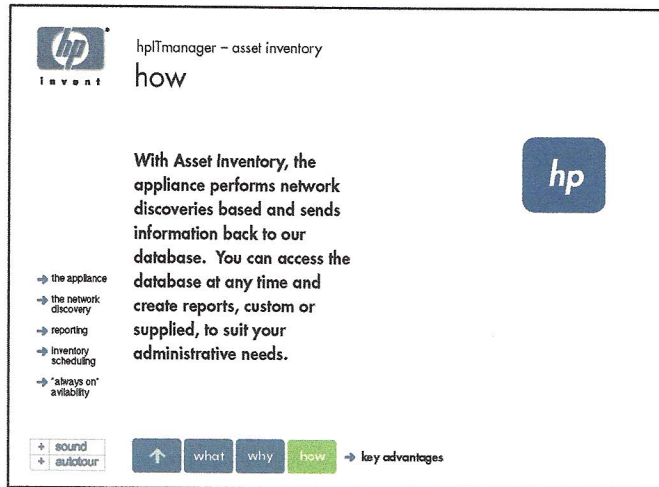
- 1) box by box, change to orange fill with white circle.
- 2) Box-set shrinks slowly until the box-set is the size of illustration below (next board)



SCREEN #: 4-01.5
TITLE: HOW: intro
DESCRIPTION:

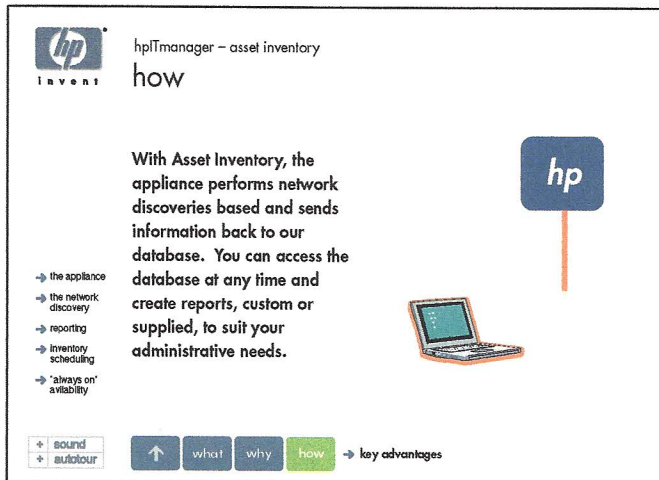
- 1) hp box appears
- 2) appliance appears
- 3) connection lines appears
- 4) packet is sent from HP box to Appliance
- 5) box-set color-cycles to show activity.
- 6) packet is sent from Appliance to HP Box

4-01.6 to 4-01.8 HOW



SCREEN #: 4-01.6
TITLE: HOW: Intro
DESCRIPTION:

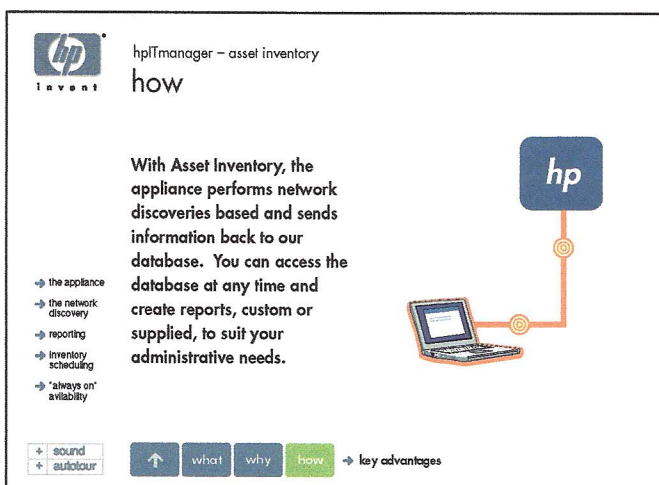
1) everything but the HP box disappears.



SCREEN #: 4-01.7
TITLE: HOW: Intro
DESCRIPTION:

1) Laptop appears with greenish screen.

2) Orange line extends (animates) toward laptop



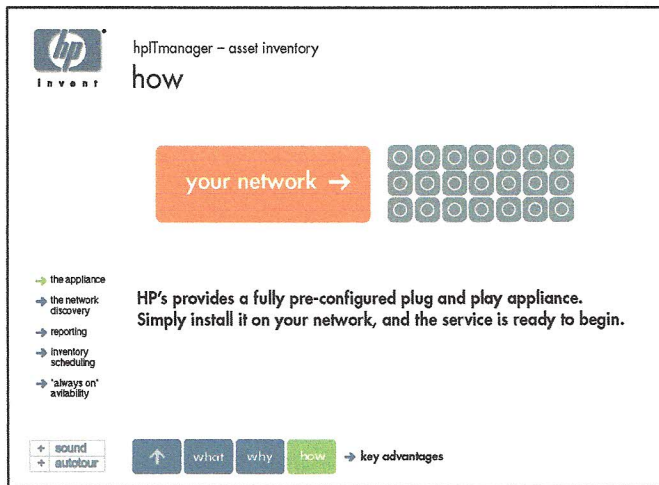
SCREEN #: 4-01.8
TITLE: HOW: intro
DESCRIPTION:

1) Orange line connects HP with Laptop

2) Packets are sent from HP to Laptop

3) Laptop lights up with report

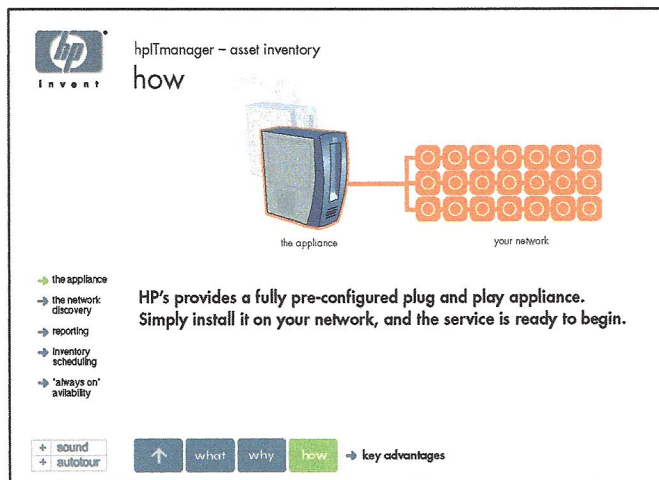
4-10 to 4-12 HOW



SCREEN #: 4-10
TITLE: HOW: THE APPLIANCE
DESCRIPTION:

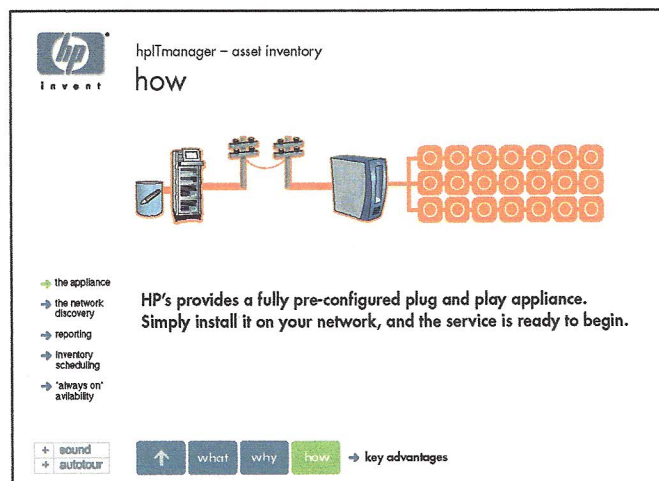
Introduce the customer's network.

- 1) Network starts off colored GREY. Big box serves as label. "your network" with an arrow pointing to client-PC symbols.
- 2) Label client-PC symbols "your network" with big box and arrows
- 3) Big "Your network" box disappears
- 4) Text label "your network" appears under Client-PC grouping



SCREEN #: 4-11
TITLE: HOW: THE APPLIANCE
DESCRIPTION:

- 5) HP appliance animates in. (possible fading or lowering). Label illustration "the appliance"
- 6) Network "powers up", turning from GREY to ORANGE, with possible color-cycling and blinking among nodes.
- 7) Labels fade out.

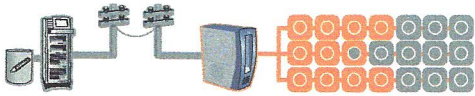


SCREEN #: 4-12
TITLE: HOW: THE APPLIANCE
DESCRIPTION:

- 8) HP appliance shrinks in size.
- 9) HP server with Database appears. Label under Server and Database reads: "secure HP database". This label fades out.
- 10) Telephone poles appear. Power connections from Appliance to HP server appear while color-cycling to orange.
- 11) The orange parts of diagram shimmer with color-effects to signify full operation.

4-13 to 4-15 HOW

hpITmanager - asset inventory
how



→ the appliance
→ the network discovery
→ reporting
→ inventory scheduling
→ 'always on' availability

The appliance performs network discovery locally, to ensure low Internet bandwidth requirements, processing time and Internet traffic.

+ sound
+ autotour

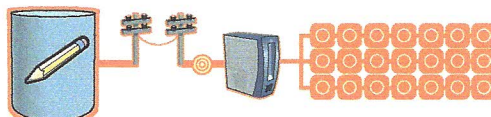
↑ what why how → key advantages

SCREEN #: 4-13
TITLE: HOW: THE APPLIANCE
DESCRIPTION:

Stress local activity.

Power surges only through the local side of diagram. Animate network operations by color-cycling, or some other effect like subtle blinking of nodes and connections.

hpITmanager - asset inventory
how



→ the appliance
→ the network discovery
→ reporting
→ inventory scheduling
→ 'always on' availability

Inventory data is compressed and passed through the Internet to our secure hp hosted database.

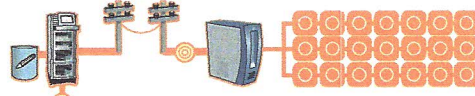
+ sound
+ autotour

↑ what why how → key advantages

SCREEN #: 4-14
TITLE: HOW: THE APPLIANCE
DESCRIPTION:

- 1) Database starts off small in size (see previous panel).
- 2) Nodes blink with activity and send signals to appliance.
- 3) Appliance sends compressed packets of information (concentric circles) through internet connection to the HP server.
- 4) Hp Database flashes orange for a while, then grows to show emphasis.

hpITmanager - asset inventory
how



→ the appliance
→ the network discovery
→ reporting
→ inventory scheduling
→ 'always on' availability

Using a standard web browser, you can initiate updates to the database, run standard reports, or create custom reports to fit your needs.

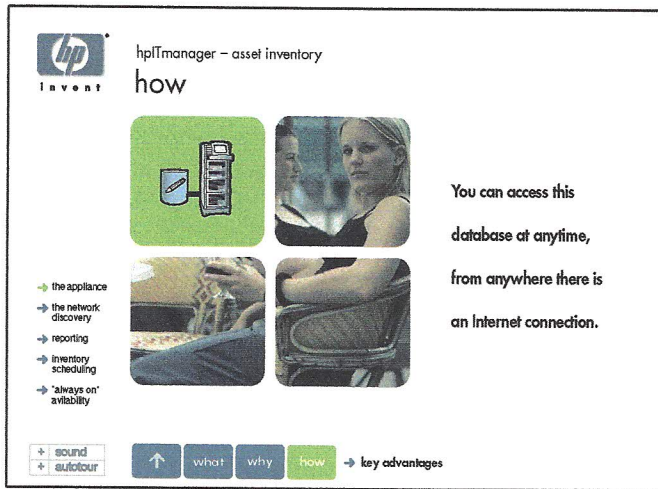
+ sound
+ autotour

↑ what why how → key advantages

SCREEN #: 4-15
TITLE: HOW: THE APPLIANCE
DESCRIPTION:

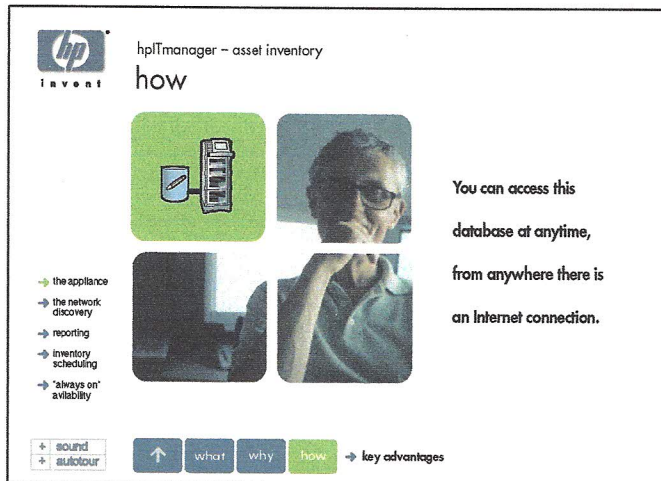
- 1) Database shrinks to normal.
- 2) Customer Laptop appears
- 3) Orange line is extended from laptop to HP server
- 4) Packet (concentric circles) is sent from Laptop to HP server.
- 5) Packet travels from HP server, thru internet, to Appliance.
- 6) Network becomes active, color-cycles and blinks.
- 7) Packet travels back from network to HP server, then finally to laptop
- 8) Laptop lights up with different screens to signify reports being recieved.

4-16 HOW



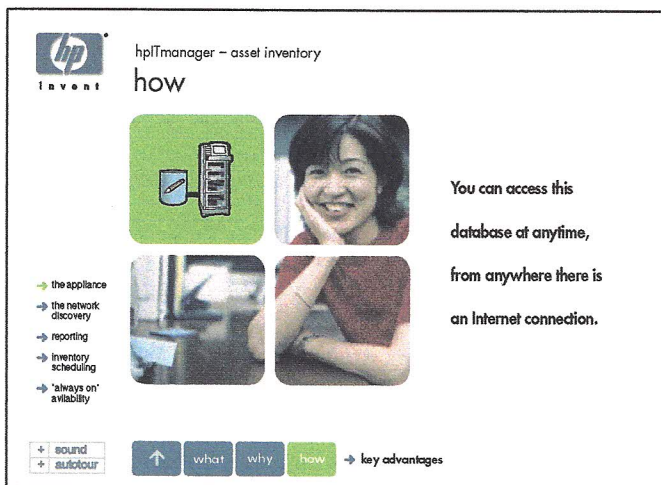
SCREEN #: 4-16.1
TITLE: HOW: THE APPLIANCE
DESCRIPTION:

- 1) Server and database persists from previous screen
- 2) Green box appears behind Server and Database.
- 3) Text appears
- 4) Picture appears, box by box.



SCREEN #: 4-16.2
TITLE: HOW: THE APPLIANCE
DESCRIPTION:

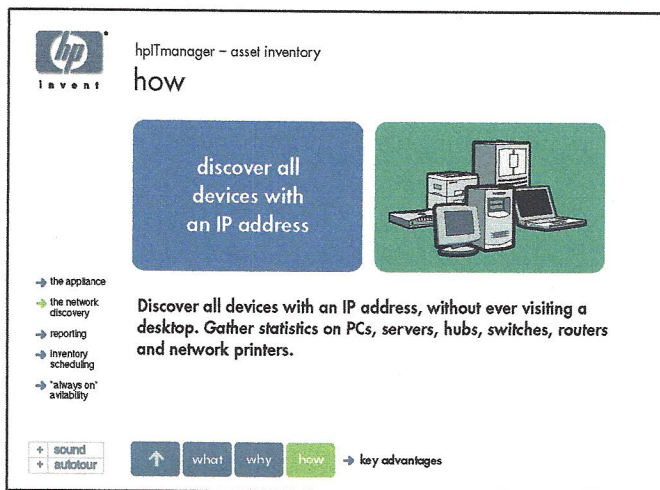
New picture wipes in, box by box



SCREEN #: 4-16.3
TITLE: HOW: THE APPLIANCE
DESCRIPTION:

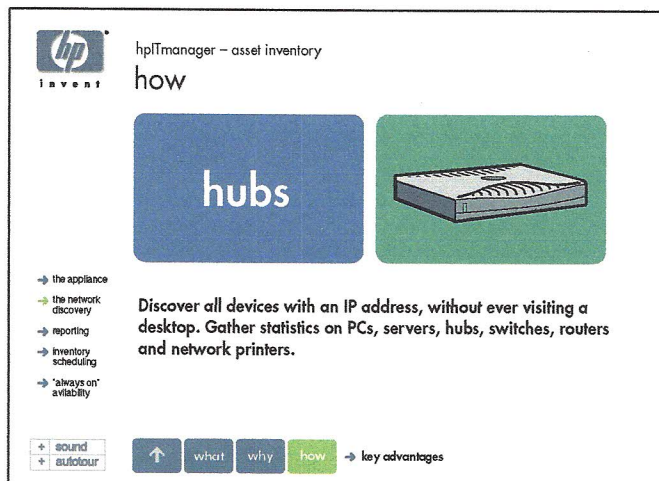
New picture wipes in, box by box

4-20 HOW



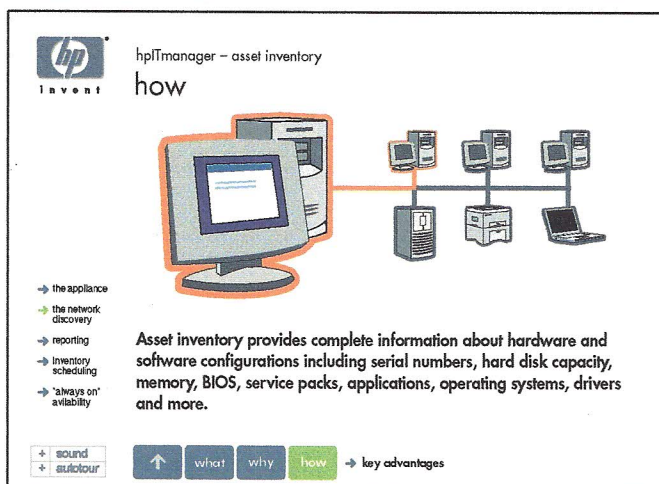
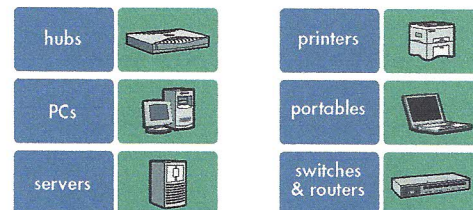
SCREEN #: 4-20.1
TITLE: THE NETWORK DISCOVERY
DESCRIPTION:

- 1) Colored boxes appear along with text below.
- 2) "discover all devices with an IP address" appears
- 3) One by one, a device zooms out onto the second box to form a collection of devices.



SCREEN #: 4-20.2
TITLE: THE NETWORK DISCOVERY
DESCRIPTION:

- 4) Hard cut (no fades) to picture of individual device, along with the name of device.
- 5) Sequentially run through combinations below.



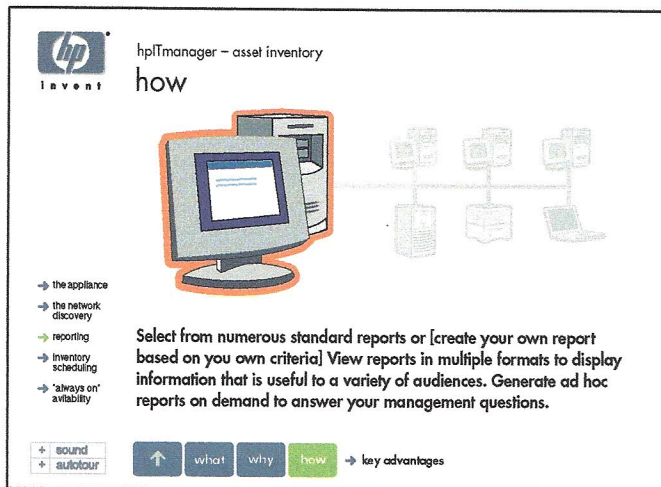
SCREEN #: 4-21
TITLE: the network discovery
DESCRIPTION:

Orange line travels to each node randomly. Black outline around the active node turns orange.

Meanwhile, the big screen (customer's screen) lights up with reports

The reports change when a different node is scanned

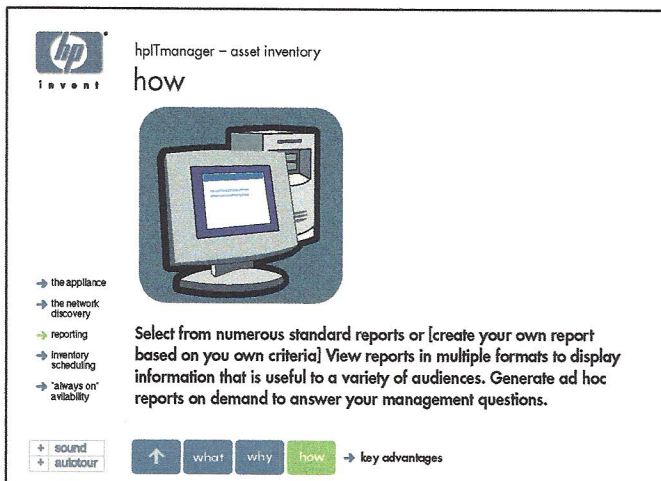
4-30 HOW



SCREEN #: 4-30
TITLE: HOW: reporting
DESCRIPTION:

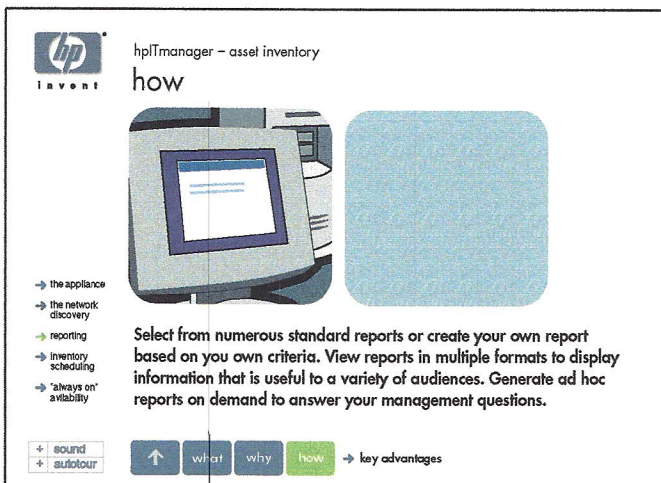
Illustration from previous screen fades with exception to big monitor and computer.

Text appears



SCREEN #: 4-30.1
TITLE: HOW: reporting
DESCRIPTION:

Box forms around big monitor and computer.

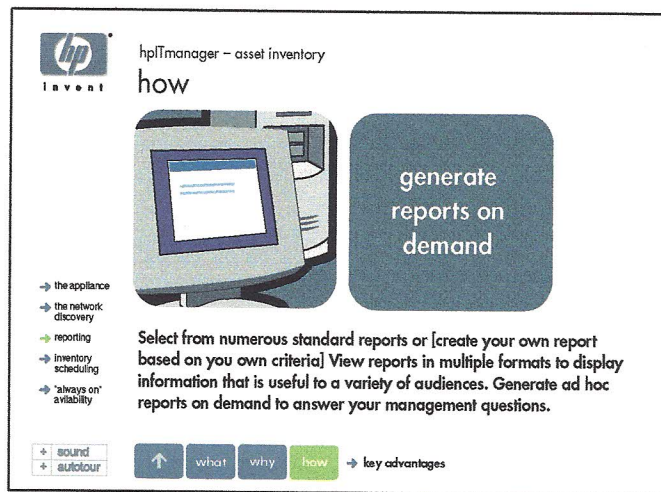


SCREEN #: 4-30.2
TITLE: HOW: reporting
DESCRIPTION:

Illustration zooms in within box while 2nd box forms.

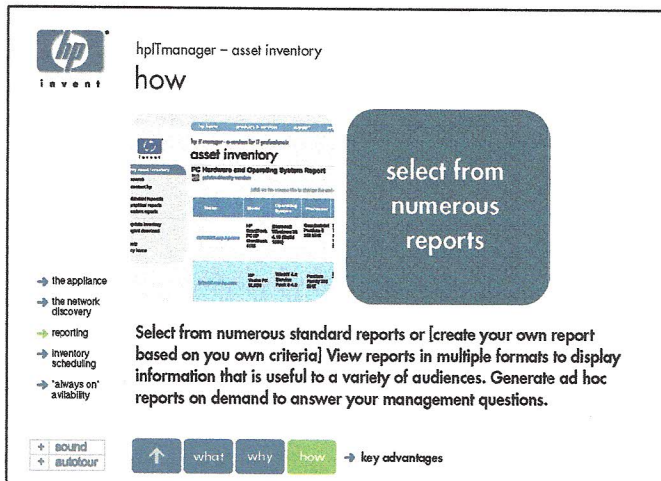
NOTE TO MICHELLE:
"Actual service and list of reports" shown in next group of boards.

4-30.3 to 4-30.5 HOW



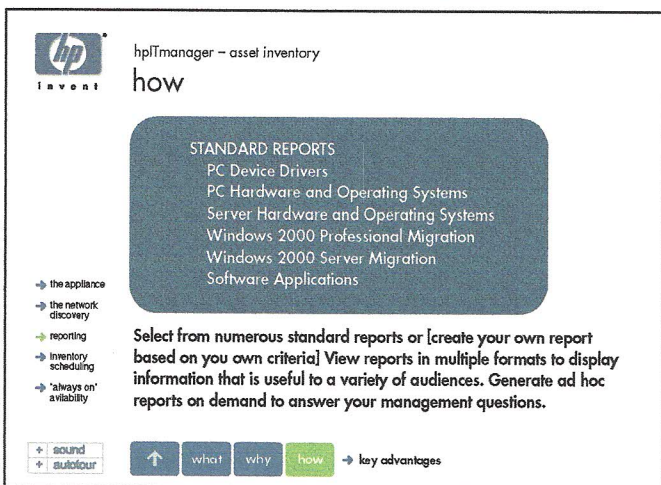
SCREEN #: 4-30.3
TITLE: HOW: reporting
DESCRIPTION:

- 1) White text, "generate reports on demand" appears on 2nd box
- 2) Illustration zooms while fading into report screens



SCREEN #: 4-30.4
TITLE: HOW: reporting
DESCRIPTION:

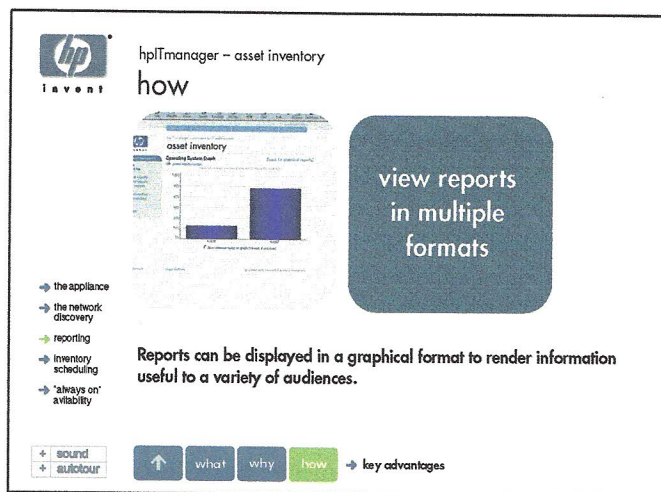
- 1) White text changes to "select from numerous reports while various report screens zoom, pan and fade into each other."



SCREEN #: 4-30.5
TITLE: HOW: reporting
DESCRIPTION:

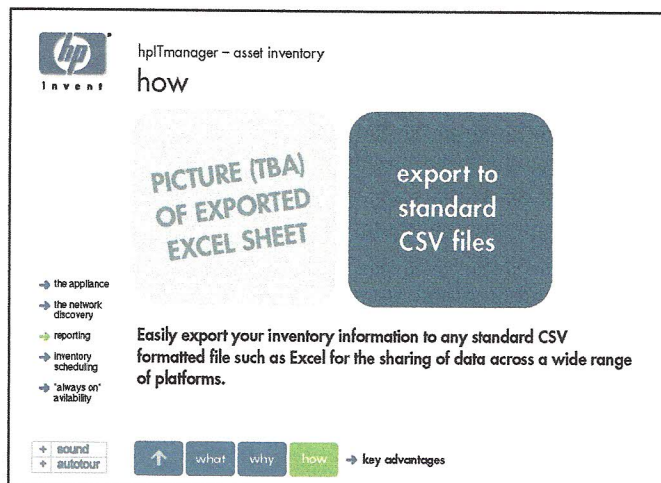
- 1) Two boxes merge into one big box.
- 2) White text animates in, line by line, reflecting a list of standard reports.

4-30.6 TO 4-30.7 HOW



SCREEN #: 4-30.6
TITLE: HOW: reporting
DESCRIPTION:

1) 1st box shows different image-pans of different graphical reports corresponding to text below

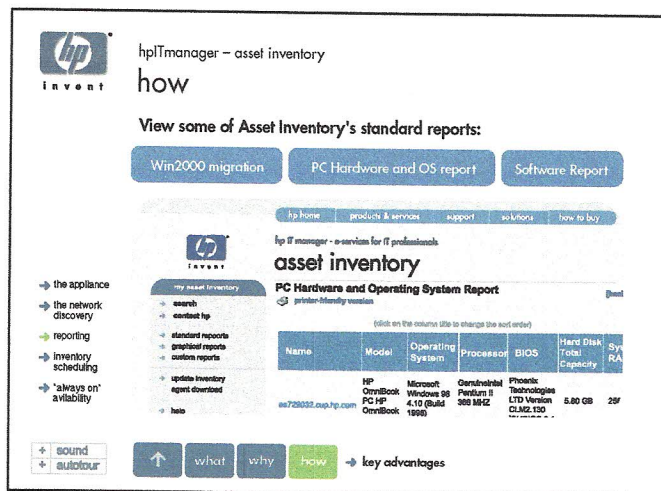


SCREEN #: 4-30.7
TITLE: HOW: reporting
DESCRIPTION:

1) White text, "export to standard CSV files"

2) Pan picture of exported excel sheet

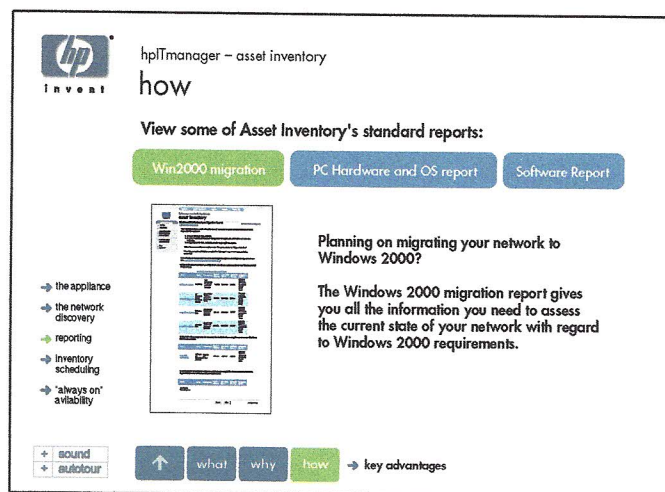
4-31 HOW



SCREEN #: 4-31
TITLE: HOW: reporting
DESCRIPTION:

- 1) Self-Running fade-and-pan through different reports.
- 2) When user clicks a report option, the screen goes through a little tour.

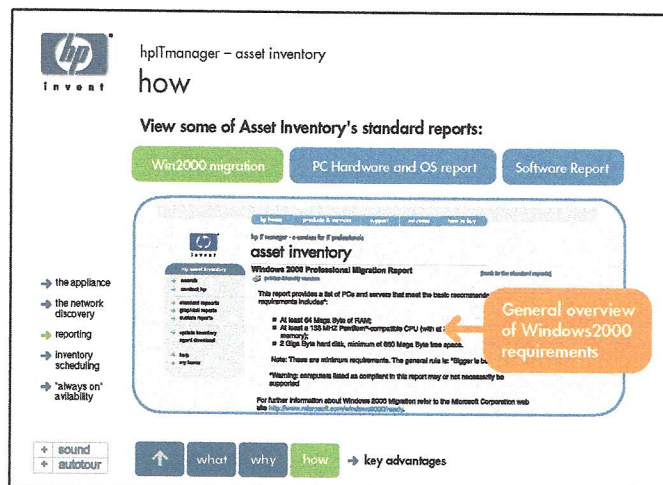
4-32 HOW



SCREEN #: 4-32.1
TITLE: HOW: reporting
DESCRIPTION:

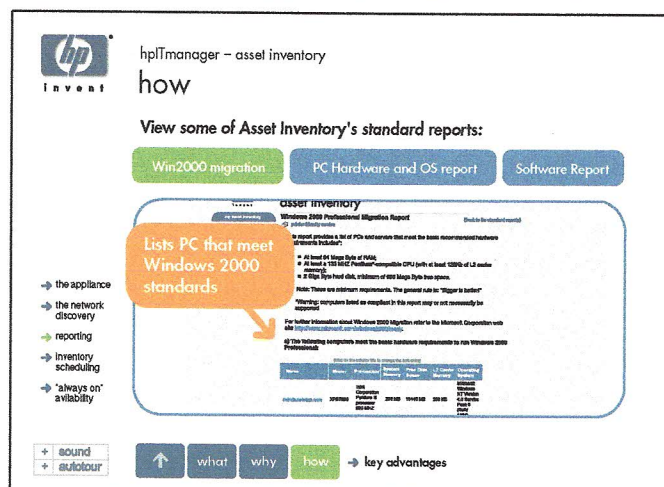
When "Win 2000 migration" is chosen:

- 1) Text and full screen with border pops in



SCREEN #: 4-32.2
TITLE: HOW: reporting
DESCRIPTION:

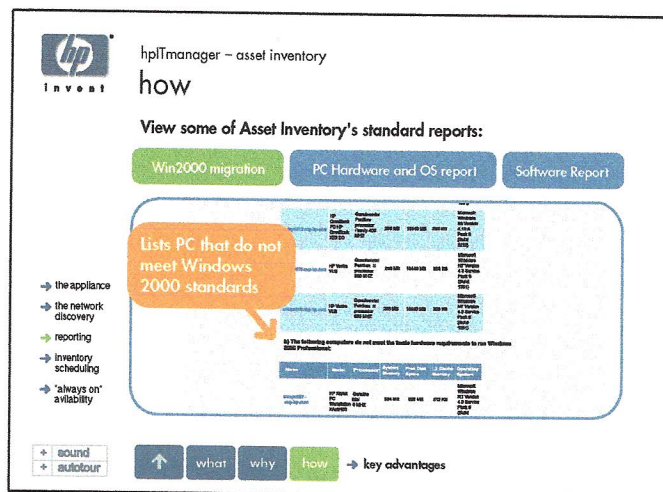
- 1) Report quickly zooms in.
- 2) Callout window with text fades in
- 3) Callout window points to Requirements area.
- 4) Report slowly scrolls vertically.



SCREEN #: 4-32.3
TITLE: HOW: reporting
DESCRIPTION:

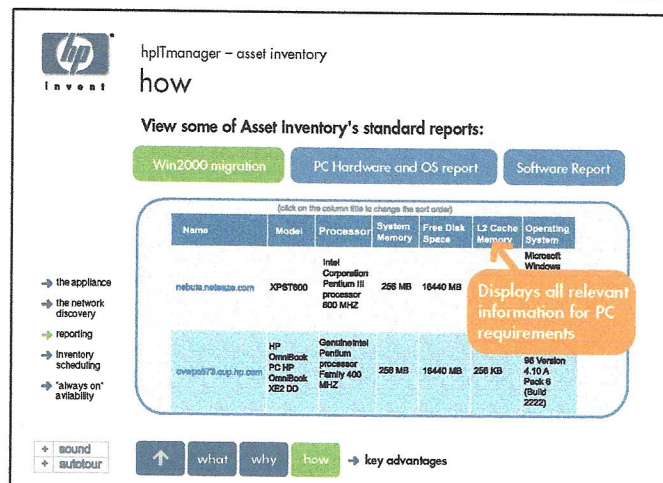
- 1) Report scrolls to make "the following computers meet..." visible within the window
- 2) Callout window with new text moves into position.

4-32 HOW



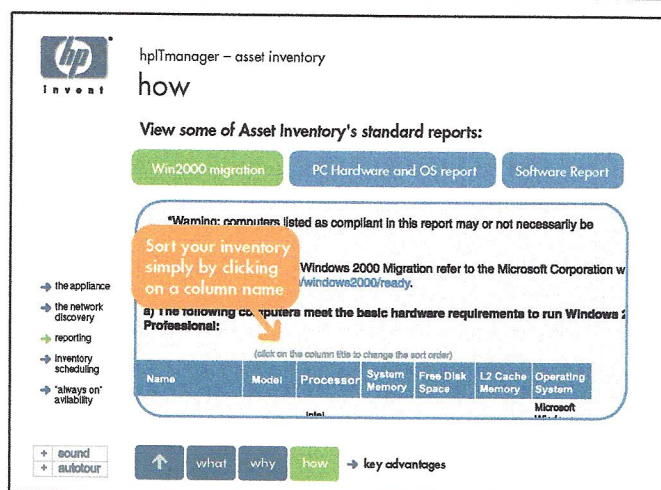
SCREEN #: 4-32.4
TITLE: HOW: reporting
DESCRIPTION:

- 1) Report scrolls to make "the following computers do not meet..." visible within the window
- 2) Callout window with new text moves into position.



SCREEN #: 4-32.5
TITLE: HOW: reporting
DESCRIPTION:

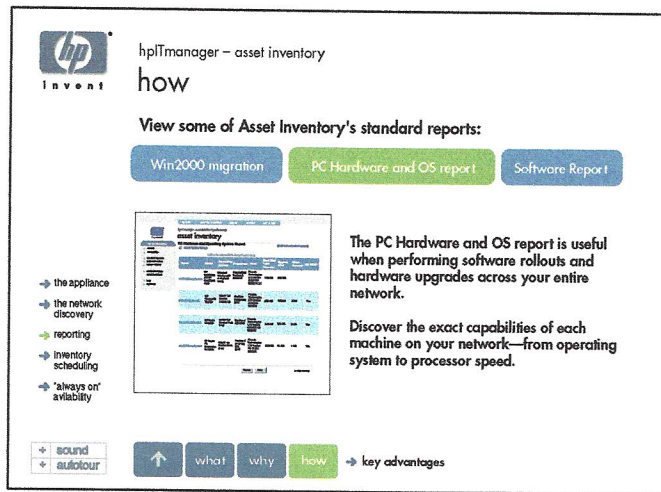
- 1) Report scrolls up to show title bar of table
- 2) Callout window with new text moves into position.



SCREEN #: 4-32.6
TITLE: HOW: reporting
DESCRIPTION:

- 1) Report zooms in and pans horizontally at titlebar.
- 2) Callout window with new text moves into position.

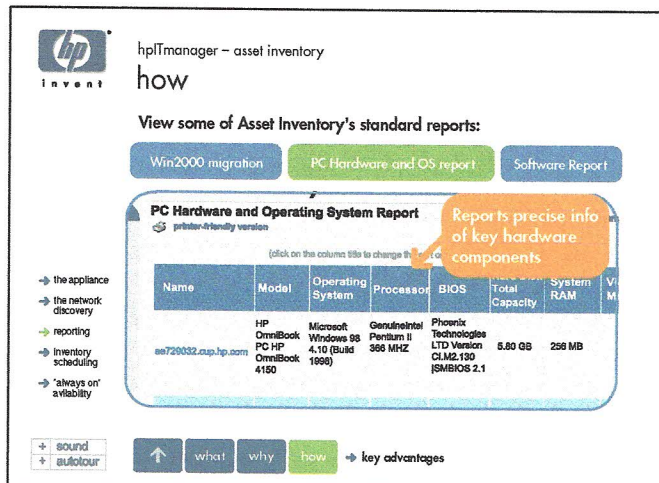
4-33 HOW



SCREEN #: 4-33.1
TITLE: HOW: reporting
DESCRIPTION:

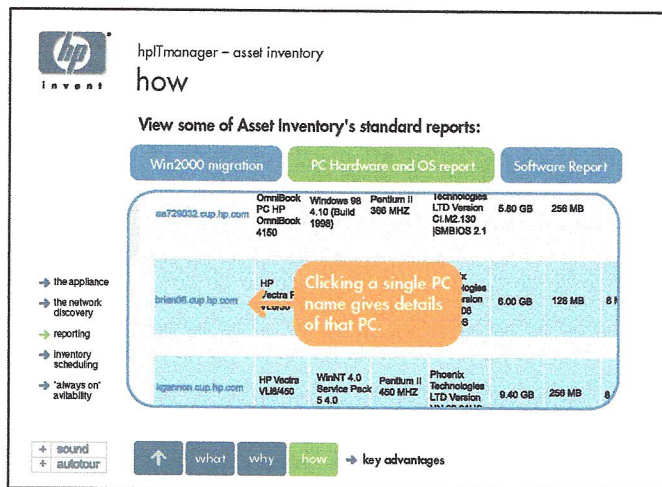
When "PC Hardware and OS" is chosen:

- 1) Text and full screen with border pops in



SCREEN #: 4-33.2
TITLE: HOW: reporting
DESCRIPTION:

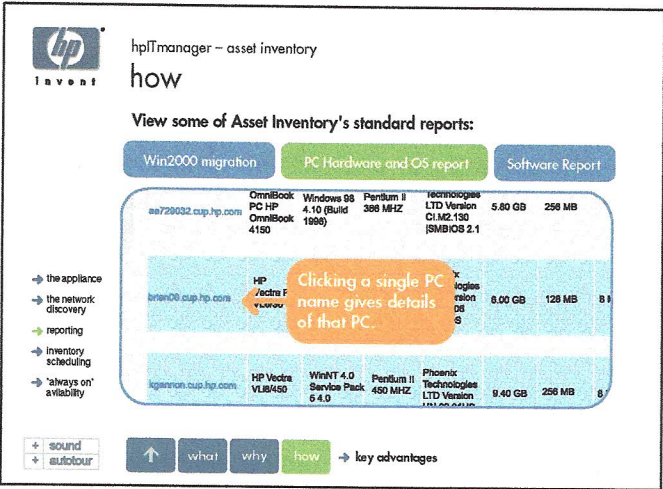
- 1) Report zooms in and pans left to right slowly
- 2) Callout box moves into position and points to table titlebar



SCREEN #: 4-33.3
TITLE: HOW: reporting
DESCRIPTION:

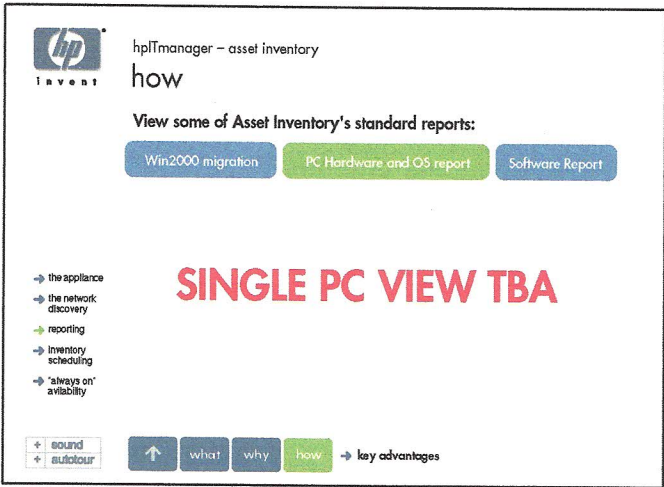
- 1) Report zooms in to show machine name
- 2) Callout box points to machine name

4-33 HOW



SCREEN #: 4-33.3
TITLE: HOW: reporting
DESCRIPTION:

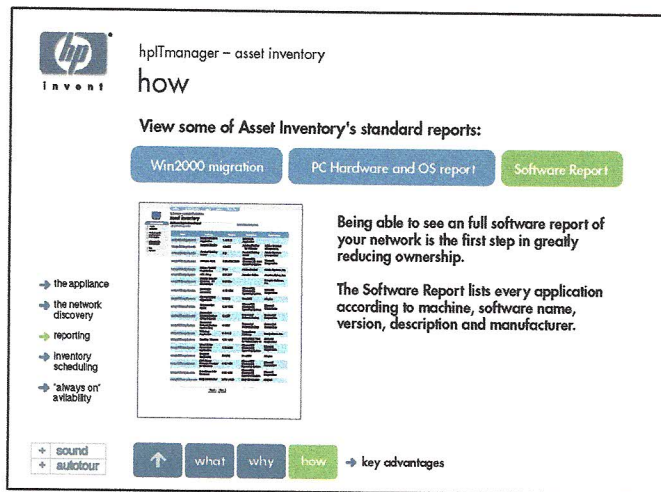
(repeated screen from previous storyboard)



SCREEN #: 4-33.4
TITLE: HOW: reporting
DESCRIPTION:

Screen showing details of the chosen PC

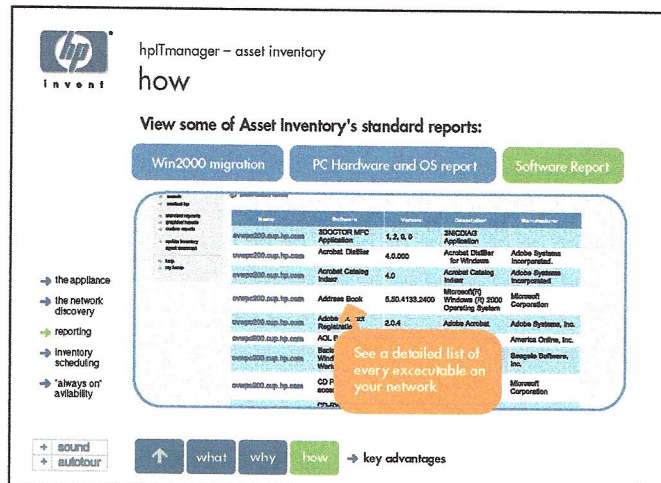
4-34 HOW



SCREEN #: 4-34.1
TITLE: HOW: reporting
DESCRIPTION:

When "Software Report" is chosen:

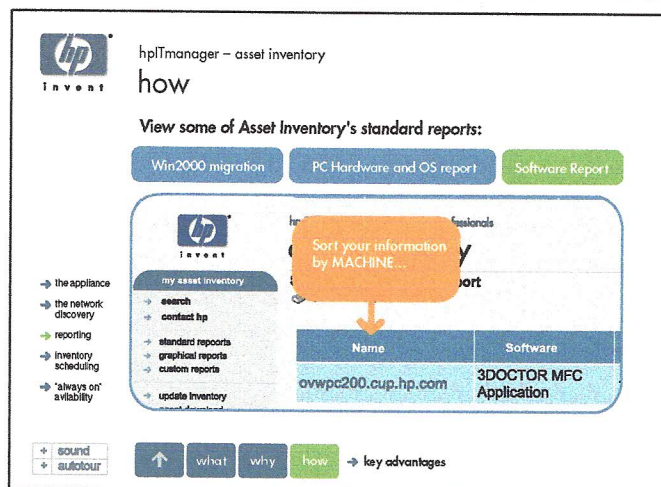
- 1) Text and full screen with border pops in



SCREEN #: 4-34.2
TITLE: HOW: reporting
DESCRIPTION:

When "Software Report" is chosen:

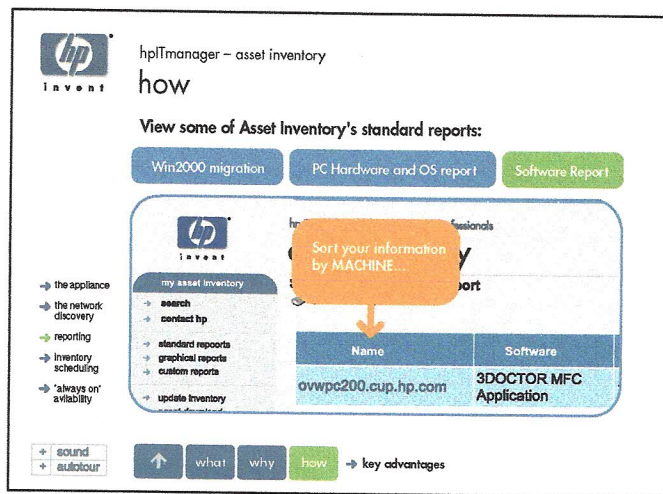
- 1) Report zooms in an pans vertically (slowly)
- 2) Callout box with text fades in, pointing to the "software" column of table.



SCREEN #: 4-34.3
TITLE: HOW: reporting
DESCRIPTION:

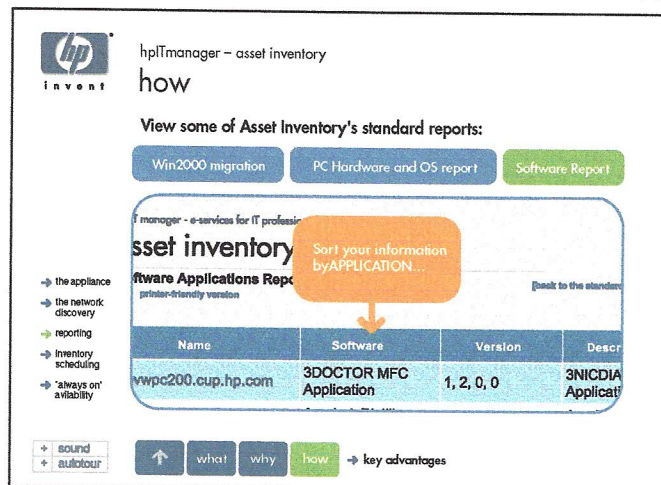
- 1) Report zooms in further.
- 2) Callout box points downward to column titles as...
- 3) Report slowly pans horizontally
- 4) When different titles reach arrows, the text within the callout box changes accordingly

4-34 HOW



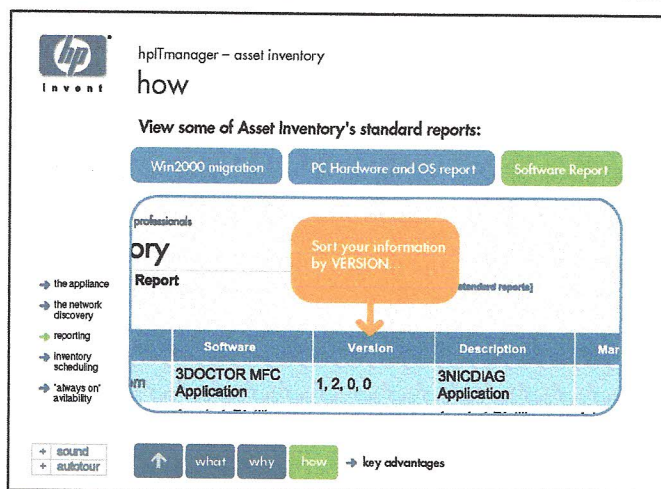
SCREEN #: 4-34.3
TITLE: HOW: reporting
DESCRIPTION:

- 1) Report slowly pans horizontally
- 2) When different titles reach arrows, the text within the callout box changes accordingly



SCREEN #: 4-34.4
TITLE: HOW: reporting
DESCRIPTION:

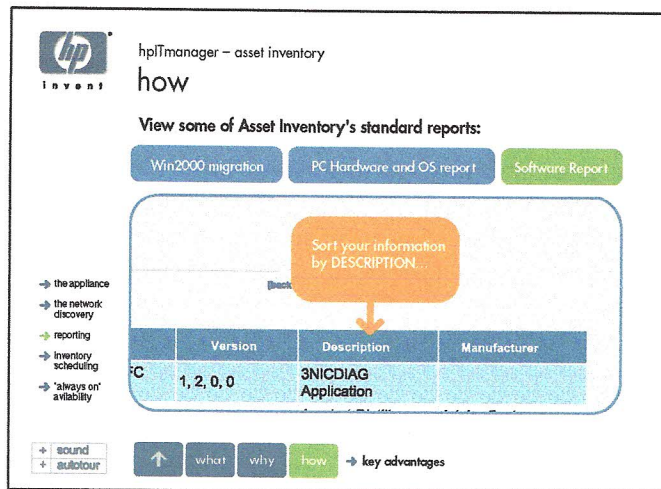
- 1) Report slowly pans horizontally
- 2) When different titles reach arrows, the text within the callout box changes accordingly



SCREEN #: 4-34.5
TITLE: HOW: reporting
DESCRIPTION:

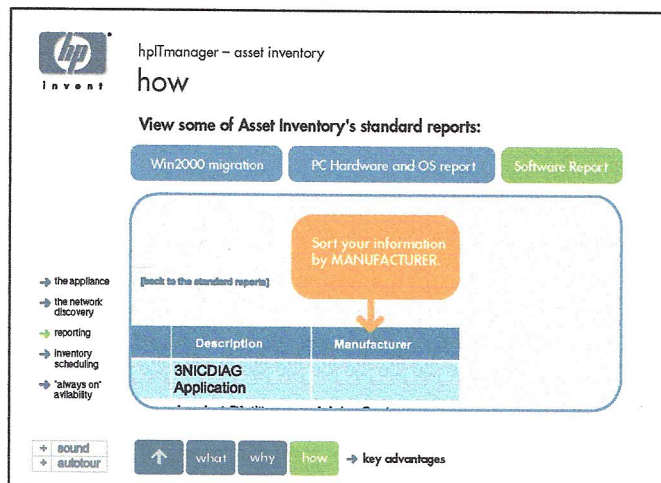
- 1) Report slowly pans horizontally
- 2) When different titles reach arrows, the text within the callout box changes accordingly

4-34 HOW



SCREEN #: 4-34.6
TITLE: HOW: reporting
DESCRIPTION:

- 1) Report slowly pans horizontally
- 2) When different titles reach arrows, the text within the callout box changes accordingly



SCREEN #: 4-34.7
TITLE: HOW: reporting
DESCRIPTION:

- 1) Report slowly pans horizontally
- 2) When different titles reach arrows, the text within the callout box changes accordingly

4-40 to 4-41 HOW

hp
invent

hplTmanager – asset inventory
how

Asset inventory's database is comprehensive to ensure that the most up-to-date information is available. The background scheduler routinely polls assets for the most current information so that changes are automatically discovered.

- the appliance
- the network discovery
- reporting
- inventory scheduling
- "always on" availability

sound
autotour

↑ what why how → key advantages

SCREEN #: 4-40.1
TITLE: HOW: INVENTORY SCHEDULING
DESCRIPTION:

- 1) Network and database illustration appears (the three bottom nodes are greyed out to signify a power-down)
- 2) Orange lines of Network blink to signify activity.
- 3) 3 or more Packets are sent from Appliance to HP Server
- 4) 1 Packet is sent from HP to customer's Laptop
- 5) Customer's Laptop lights up with new report

hp
invent

hplTmanager – asset inventory
how

PC Users that have not been connected or have been powered down are eventually discovered, and are added to the database.

- the appliance
- the network discovery
- reporting
- inventory scheduling
- "always on" availability

sound
autotour

↑ what why how → key advantages

SCREEN #: 4-40.2
TITLE: HOW: INVENTORY SCHEDULING
DESCRIPTION:

- 1) The three bottom nodes turn on, blinking from grey to full color
- 2) Lines from the three bottom-right nodes blink to orange
- 3) Orange Network lines (orange) blink to signify activity while 3 packets are sent from Appliance to HP server.
- 4) 1 Packet is sent from HP to customer's Laptop
- 5) Customer's Laptop lights up with new report

hp
invent

hplTmanager – asset inventory
how

You have the option to perform updates on-demand...

- the appliance
- the network discovery
- reporting
- inventory scheduling
- "always on" availability

sound
autotour

↑ what why how → key advantages

SCREEN #: 4-41.1
TITLE: HOW: INVENTORY SCHEDULING
DESCRIPTION:

Sequence spread across two boards.

- 1) Packet is sent from Laptop to HP server

4-41 HOW

hpITmanager - asset inventory
how

→ the appliance
→ the network discovery
→ reporting
→ inventory scheduling
→ 'always on' availability

You have the option to perform updates on-demand...

+ sound
+ autotour

↑ what why how → key advantages

SCREEN #: 4-41.2
TITLE: HOW: INVENTORY SCHEDULING
DESCRIPTION:

- 2) HP server sends packet to Appliance (to perform updates)
- 3) Orange lines on Network color-cycle and flash to signify inventory updates.
- 4) 3 Packets are sent from Appliance to HP Server
- 5) Packet is sent from HP Server to Laptop
- 6) Laptop screen lights up with new updated reports

hpITmanager - asset inventory
how

→ the appliance
→ the network discovery
→ reporting
→ inventory scheduling
→ 'always on' availability

...or utilize the default scheduler, which has a minimal footprint on network resources.

+ sound
+ autotour

↑ what why how → key advantages

SCREEN #: 4-41.3
TITLE: HOW: INVENTORY SCHEDULING
DESCRIPTION:

Animation of working system without customer's presence.

- 1) Network lines color-cycle and animates to signify activity
- 2) Packets are sent from Appliance to HP Server

hpITmanager - asset inventory
how

→ the appliance
→ the network discovery
→ reporting
→ inventory scheduling
→ 'always on' availability

...or utilize the default scheduler, which has a minimal footprint on network resources.

+ sound
+ autotour

↑ what why how → key advantages


SCREEN #: 4-41.4
TITLE: HOW: INVENTORY SCHEDULING
DESCRIPTION:

Customer's computer logs in and receives updates and reports.

- 1) Packet sent from Laptop to HP Server (a request)
- 2) Packet returns from HP Server to Laptop
- 3) Laptop screen lights up with new reports

4-50 HOW

hpITmanager - asset inventory
how



Access your services and data remotely, 24 hours a day, 7 days a week.

- the appliance
- the network discovery
- reporting
- inventory scheduling
- 'always on' availability

+ sound
+ autotour

↑ what why how → key advantages

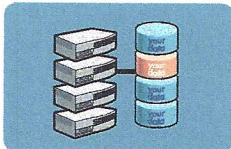
SCREEN #: 4-51
TITLE: HOW: ALWAYS ON AVAILABILITY
DESCRIPTION:

"Lifestyle" picture changes 3 times. "access" zooms in (ease out)
Quickly segway to next screen.



hpITmanager - asset inventory
how

your data



Redundant web servers and RAID disks with backup power and multiple Internet connections ensure that you have full control over your network, anytime, from anywhere there is an Internet connection.

- the appliance
- the network discovery
- reporting
- inventory scheduling
- 'always on' availability

+ sound
+ autotour

↑ what why how → key advantages

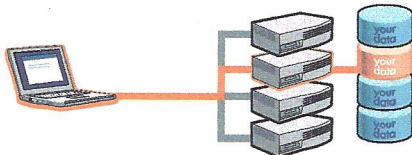
SCREEN #: 4-52
TITLE: HOW: ALWAYS ON AVAILABILITY
DESCRIPTION:

"your data" zooms in (ease out) ; background changes from picture to colorfield.

Redundant servers (colo) appear with customer's database.

Boxes disappear.

hpITmanager - asset inventory
how



Redundant web servers and RAID disks with backup power and multiple Internet connections ensure that you have full control over your network, anytime, from anywhere there is an Internet connection.

- the appliance
- the network discovery
- reporting
- inventory scheduling
- 'always on' availability

+ sound
+ autotour

↑ what why how → key advantages

SCREEN #: 4-53
TITLE: HOW: ALWAYS ON AVAILABILITY
DESCRIPTION:

Laptop appears.

Power (orange) switches randomly from lapto to different servers, to illustrate what happens during traffic overloads or anomalies.

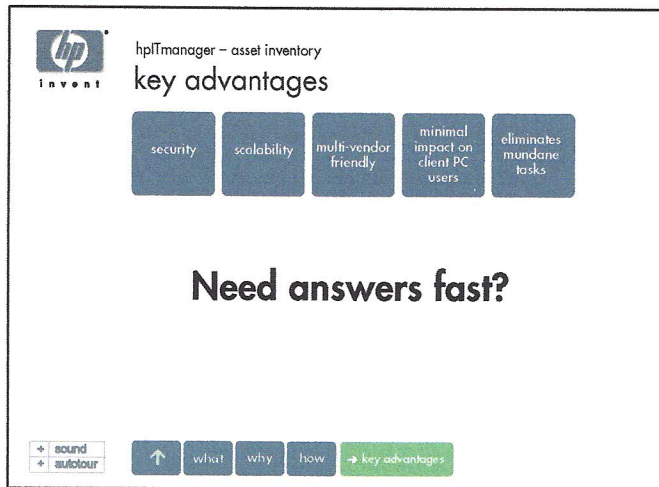
asset inventory

5-00



KEY ADVANTAGES

5-00 KEY ADVANTAGES



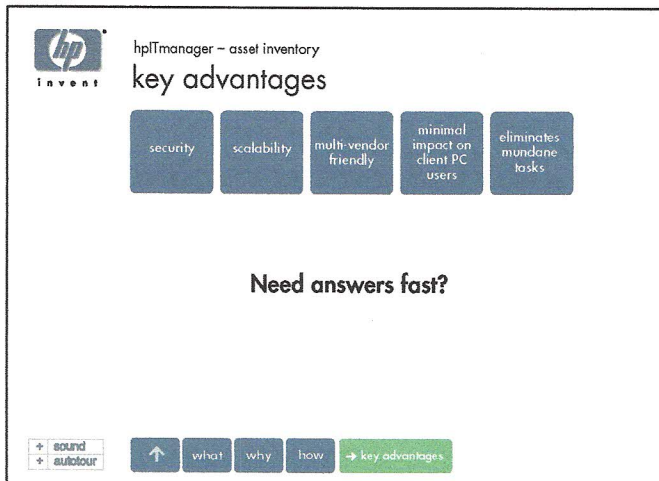
SCREEN #: 5-00
TITLE: Key Advantages Landing
DESCRIPTION:

Boxes appear sequentially from left to right.

This section will be rollover based. Roll over a box, and the copy below will change.

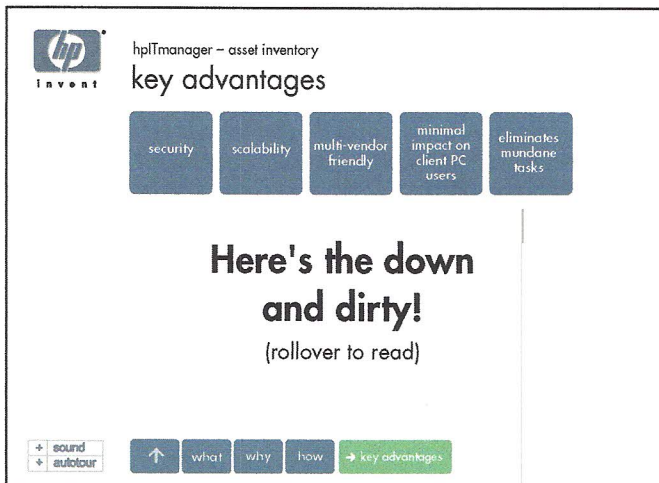
The purpose is to allow quick browsing.

1) Black text fades-in and zooms out slowly



SCREEN #: 5-01
TITLE: Key Advantages Landing
DESCRIPTION:

1) Black text fades-in and zooms out slowly

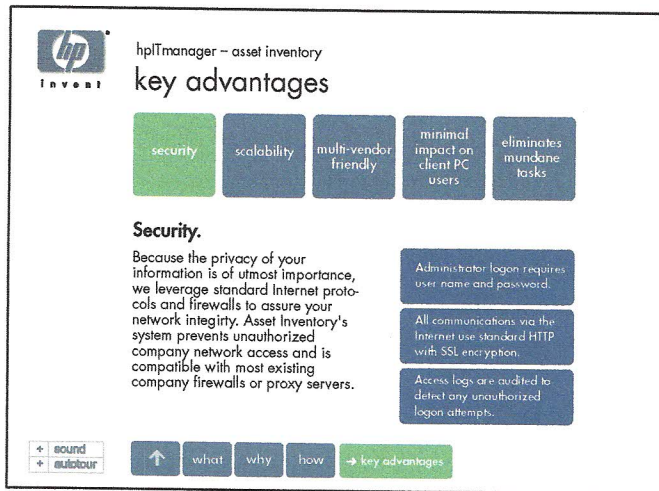


SCREEN #: 5-02
TITLE: Key Advantages Landing
DESCRIPTION:

1) Black text fades-in and zooms out slowly

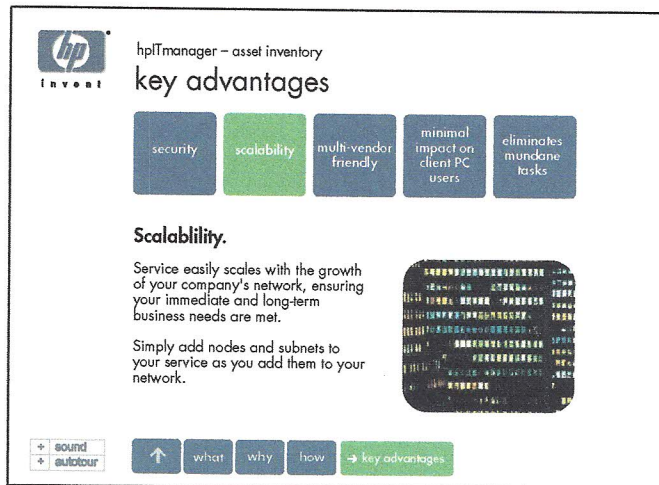
2) 5-00 to 5-02 loops back upon itself

5-11 TO 5-13 KEY ADVANTAGES



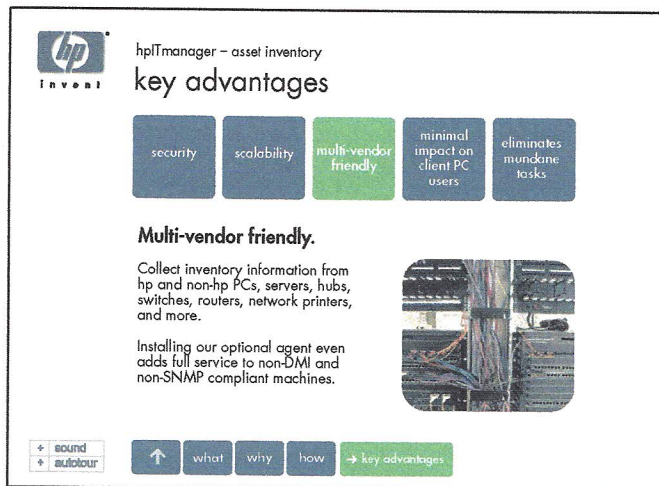
SCREEN #: 5-11
TITLE: KEY ADVANTAGES: SECURITY
DESCRIPTION:

- 1) HIGHLIGHT AND TEXT APPEAR ON ROLLOVER
- 2) Blue boxes with text swish in



SCREEN #: 5-12
TITLE: KEY ADVANTAGES: SCALABILITY
DESCRIPTION:

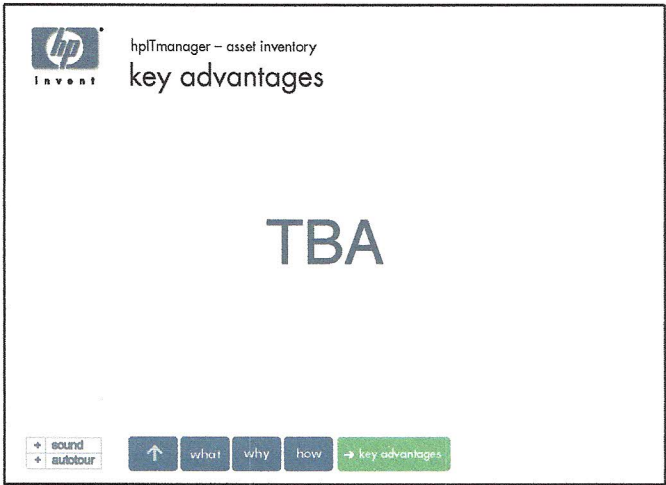
- 1) HIGHLIGHT AND TEXT APPEAR ON ROLLOVER
- 2) Box appears with cityscape zooming out



SCREEN #: 5-13
TITLE: KEY ADVANTAGES: MULTI-VENDOR
DESCRIPTION:

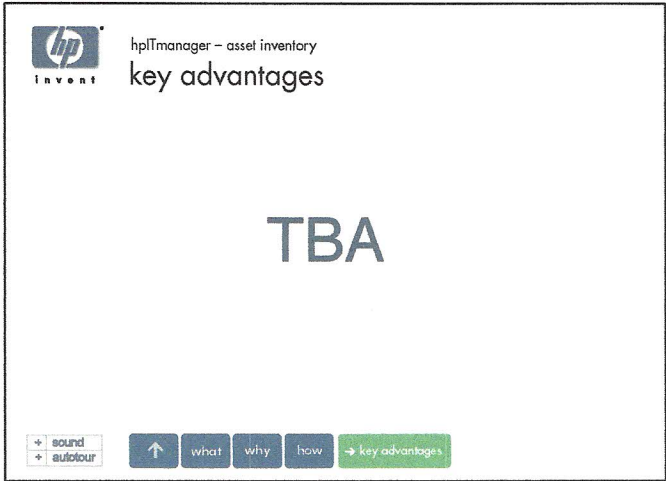
- 1) HIGHLIGHT AND TEXT APPEAR ON ROLLOVER
- 2) Box appears with computer shot zooming out (provided there is enough picture to zoom)

6-10 EXIT AND CLOSING PITCH



SCREEN #: 6-10
TITLE: EXIT AND CLOSING PITCH
DESCRIPTION:

TBA



SCREEN #: 6-10
TITLE: EXIT AND CLOSING PITCH
DESCRIPTION: